



**RESOLUTION OF THE GOVERNING BODY OF THE  
THREE AFFILIATED TRIBES OF THE  
FORT BERTHOLD INDIAN RESERVATION**

***A Resolution entitled, "Consent to Certain Rights of Way across Tribal land for the  
Fort Berthold Rural Water System - Subsequent Users Project"***

- WHEREAS,** This Nation having accepted the Indian Reorganization Act of June 18, 1934, the authority under said Act, and having adopted a Constitution and By-laws under said Act; and
- WHEREAS,** Pursuant to Article III, Section 1 of the Constitution and By-Laws of the Three Affiliated Tribes, the Tribal Business Council is the governing body of the Tribes; and
- WHEREAS,** Pursuant to Article VI, Section 5(1) of said Constitution, the Tribal Business Council has the power to adopt resolutions regulating the procedures of the Tribal Council, its Agencies and Officials; and
- WHEREAS,** Article IX Sections 1 and 3 of the Constitution provides that the Tribal Business Council has the authority to manage and lease or otherwise deal with tribal lands and resources; and
- WHEREAS,** Leases and Rights of Way (ROWs) across tribal trust land require the consent of the Tribal Business Council pursuant to federal and tribal law; and
- WHEREAS,** Applications for Rights of Way on Tribal Land are subject to the requirements of tribal law, including Resolution No. 14-071-VJB (MHA Nation Application for Rights of Way and Use of Right of Way), Resolution No. 14-089-VJB (MHA Nation Pipeline Right-of-Way Terms and Conditions), and Resolution No. 15-045-LKH (Establishing a Procedure for the Approval of Leases, Rights of Way, Setback Variances and Permissions to Survey on Tribal Land); and
- WHEREAS,** The applications for ROW(s) described herein have been reviewed and recommended for approval in accordance with the MHA Nation's approved procedure for authorizing ROWs on tribal land; and
- WHEREAS,** A Service Line Agreement for Rural Water, and
- WHEREAS,** The Tribal Business Council finds it appropriate to authorize the ROWs described herein.



**NOW THEREFORE BE IT RESOLVED**, the Tribal Business Council hereby consents to the following ROW(s), subject to the respective Company's agreement to and execution of the Terms and Conditions and waive payment:

1. Allotment Number T 222A in the SSW, Section 02, Township 148 N. Range 90W.; McLean County, 5<sup>th</sup> Principal Meridian of North Dakota, containing a 100% share, as more particularly described in Appendix A.1.
2. Allotment Number T 227A in the S1/2NE1/4 and N1/2SE1/4, Section 02, Township 148 N. Range 90 W.; McLean County, 5<sup>th</sup> Principal Meridian of North Dakota, containing a 100% share, as more particularly described in Appendix A.2.
3. Allotment Number 0220A in the S1/2SE1/4, Section 02, Township 148N. Range 90W.; McLean County, 5<sup>th</sup> Principal Meridian of North Dakota, containing a 19.69% share, as more particularly described in Appendix A.3.
4. Allotment Number T 295A -B in the SW1/4SE1/4 and S1/2NW1/4SE1/4, Section 29, Township 150N. Range 90W.; McLean County, 5<sup>th</sup> Principal Meridian of North Dakota, containing a 100% share, as more particularly described in Appendix A.4.
5. Allotment Number 354A in the E1/2NE1/4, Section 32, Township 150N. Range 90W.; McLean County, 5<sup>th</sup> Principal Meridian of North Dakota, containing a 64.29% share, as more particularly described in Appendix A.5.
6. Allotment Number 354A -A in the W1/2NE1/4, Section 32, Township 150N. Range 90W.; McLean County, 5<sup>th</sup> Principal Meridian of North Dakota, containing a 4.46% share, as more particularly described in Appendix A.6.
7. Allotment Number T 310A -B in the W1/2NE1/4, Section 11, Township 150N. Range 90W.; McLean County, 5<sup>th</sup> Principal Meridian of North Dakota, containing a 100% share, as more particularly described in Appendix A.7.
8. Allotment Number T 310A -C in the NE1/4NE1/4, Section 11, Township 150N. Range 90W.; McLean County, 5<sup>th</sup> Principal Meridian of North Dakota, containing a 100% share, as more particularly described in Appendix A.8.
9. Allotment Number T 1529 in the N1/2NW1/4, Section 11, Township 150N. Range 90W.; McLean County, 5<sup>th</sup> Principal Meridian of North Dakota, containing a 100% share, as more particularly described in Appendix A.9.



10. Allotment Number T 359A in the SE1/4NE1/4NE1/4, E1/2SE1/4NE1/4, N1/2N1/2NE1/4, E1/2SW1/4NE1/4NE1/4 and E1/2E1/2W1/2SE1/4NE1/4, Section 33, Township 150N. Range 90W.; McLean County, 5<sup>th</sup> Principal Meridian of North Dakota, containing a 100% share, as more particularly described in Appendix A.10.
11. Allotment Number T 2277 in the NE1/4SE1/4, Section 33, Township 150N. Range 90W.; McLean County, 5<sup>th</sup> Principal Meridian of North Dakota, containing a 100% share, as more particularly described in Appendix A.11.
12. Allotment Number T 3044 in the NW1/4SE1/4 and S1/2SE1/4, Section 33, Township 150N. Range 90W.; McLean County, 5<sup>th</sup> Principal Meridian of North Dakota, containing a 100% share, as more particularly described in Appendix A.12.
13. Allotment Number 380A in the SW1/4, Section 02, Township 150N. Range 93W.; Mountrail County, 5<sup>th</sup> Principal Meridian of North Dakota, containing a 50% share, as more particularly described in Appendix A.13.
14. Allotment Number 607A in the E1/2, Section 29, Township 152N. Range 94W.; McKenzie County, 5<sup>th</sup> Principal Meridian of North Dakota, containing a 48.71% share, as more particularly described in Appendix A.14.
15. Allotment Number T 820A -C in the SE1/4SW1/4, Section 08, Township 151N. Range 94W.; McKenzie County, 5<sup>th</sup> Principal Meridian of North Dakota, containing a 100% share, as more particularly described in Appendix A.15.
16. Allotment Number 808A in the N1/2, Section 08, Township 151N. Range 94W.; McKenzie County, 5<sup>th</sup> Principal Meridian of North Dakota, containing a 99.33% share, as more particularly described in Appendix A.16.
17. Allotment Number 865A in the S1/2SE1/4, S1/2NW1/4SE1/4 and NE1/4SE1/4, Section 05, Township 148N. Range 93W.; Dunn County, 5<sup>th</sup> Principal Meridian of North Dakota, containing a 4.95% share, as more particularly described in Appendix A.17.
18. Allotment Number T 1799 -E in the W1/2E1/2SE1/4SW1/4SW1/4NW1/4, N1/2-SW1/4SW1/4NW1/4, NW1/4SE1/4SW1/4NW1/4, W1/2W1/2NE1/4SE1/4SW1/4NW1/4 SE1/4SW1/4SE1/4NW1/4, SW1/4SW1/4SW1/4NW1/4, W1/2NW1/4NE1/4SW1/4, W1/2SE1/4SW1/4SW1/4NW1/4, Section 04, Township 148N. Range 93W.; Dunn County, 5<sup>th</sup> Principal Meridian of North Dakota, containing a 100% share, as more particularly described in Appendix A.18.



19. Allotment Number T 1089A in the SE1/4SW1/4, E1/2NE1/4SW1/4, Lot 99=NE1/4SE1/4, NW1/4NE1/4SE1/4, W1/2E1/2SW1/4NE1/4SE1/4, W1/2SE1/4, W1/2SW1/4NE1/4SE1/4, Section 26, Township 148N. Range 92W.; Dunn County, 5<sup>th</sup> Principal Meridian of North Dakota, containing a 100% share, as more particularly described in Appendix A.19.
20. Allotment Number 1131A in the Lots 1 & 2, E1/2NW1/4, Section 19, Township 150N. Range 94W.; McKenzie County, 5<sup>th</sup> Principal Meridian of North Dakota, containing a 49.96% share, as more particularly described in Appendix A.20.
21. Allotment Number 1131A -A in the NE1/4, Section 24, Township 150N. Range 95W.; McKenzie County, 5<sup>th</sup> Principal Meridian of North Dakota, containing a 49.96% share, as more particularly described in Appendix A.21.
22. Allotment Number 1703 in the W1/2NE/4, Section 10, Township 148N. Range 92W.; Dunn County, 5<sup>th</sup> Principal Meridian of North Dakota, containing a 49.96% share, as more particularly described in Appendix A.22.

**BE IT FINALLY RESOLVED**, that the Chairman is hereby authorized to execute such documents and take such further actions as are necessary to carry out the terms and intent of this Resolution.



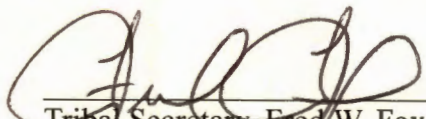
**CERTIFICATION**

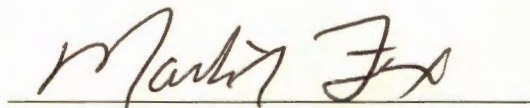
I, the undersigned, as Secretary of the Tribal Business Council of the Three Affiliated Tribes of the Fort Berthold Indian Reservation hereby certify that the Tribal Business Council is composed of seven (7) members of whom five (5) constitute a quorum, 7 were present at a Regular Meeting thereof duly called, noticed, convened and held on the 11<sup>th</sup> day of October, 2017, that the foregoing Resolution was duly adopted at such meeting by the affirmative vote of 7 members, 0 members opposed, 0 members abstained, 0 members not voting, and that said Resolution has not been rescinded or amended in any way.

Chairman [ X ] Voting. [ ] Not Voting.

Dated this 11<sup>th</sup> day of October, 2017.

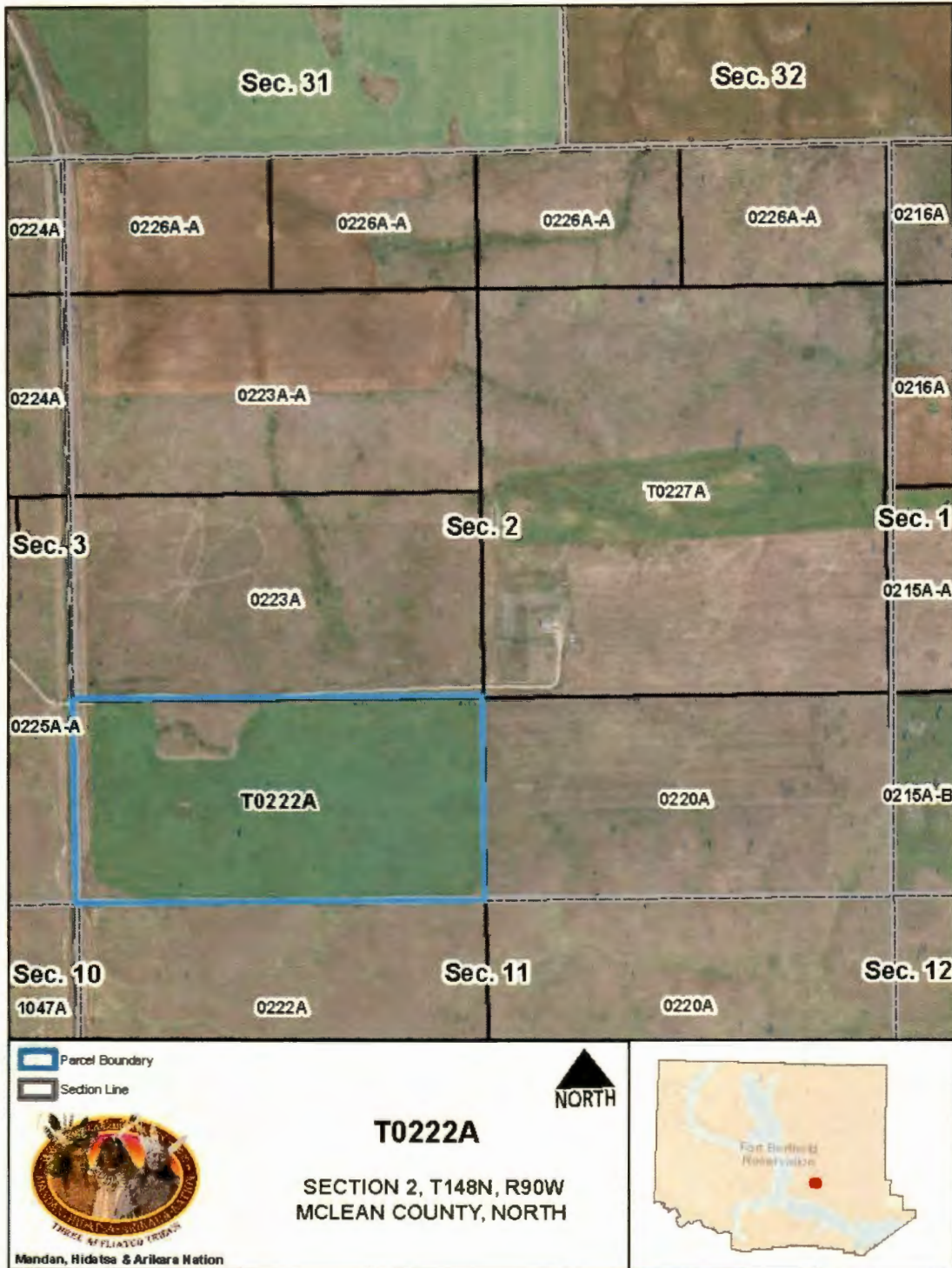
**ATTEST:**

  
\_\_\_\_\_  
Tribal Secretary, Fred W. Fox  
Tribal Business Council

  
\_\_\_\_\_  
Tribal Chairman, Mark N. Fox  
Tribal Business Council

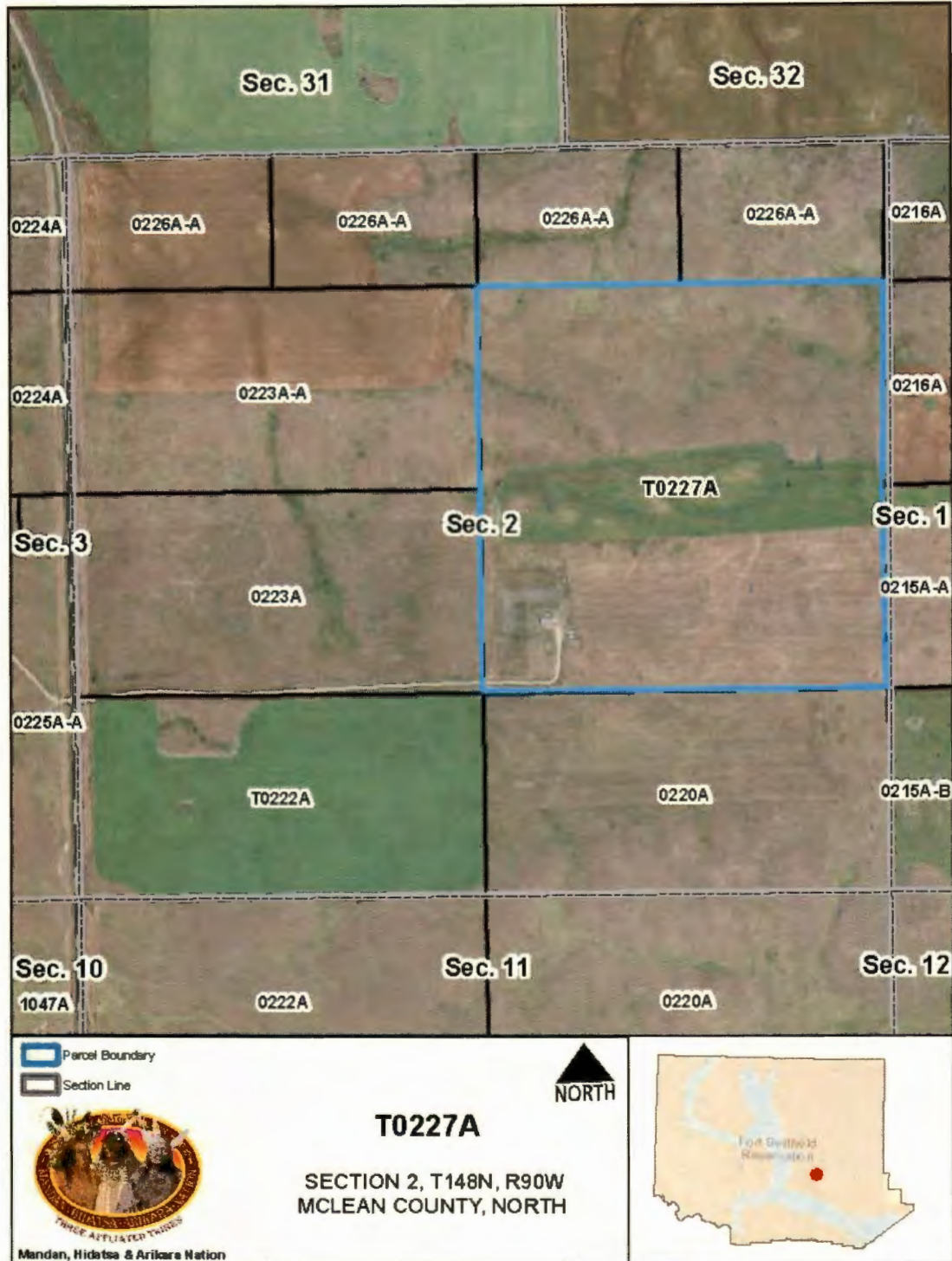


APPENDIX A.1



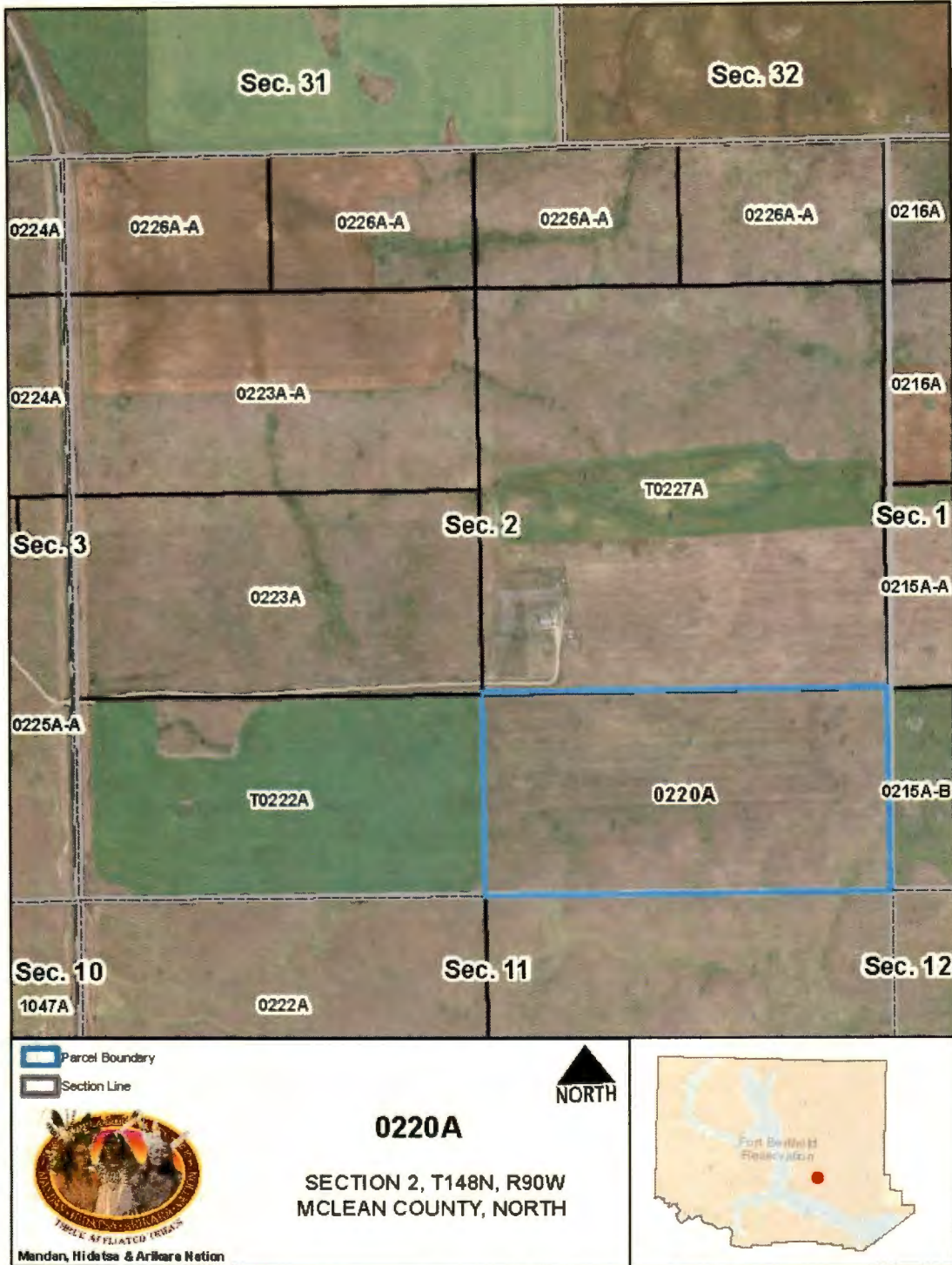


APPENDIX A.2





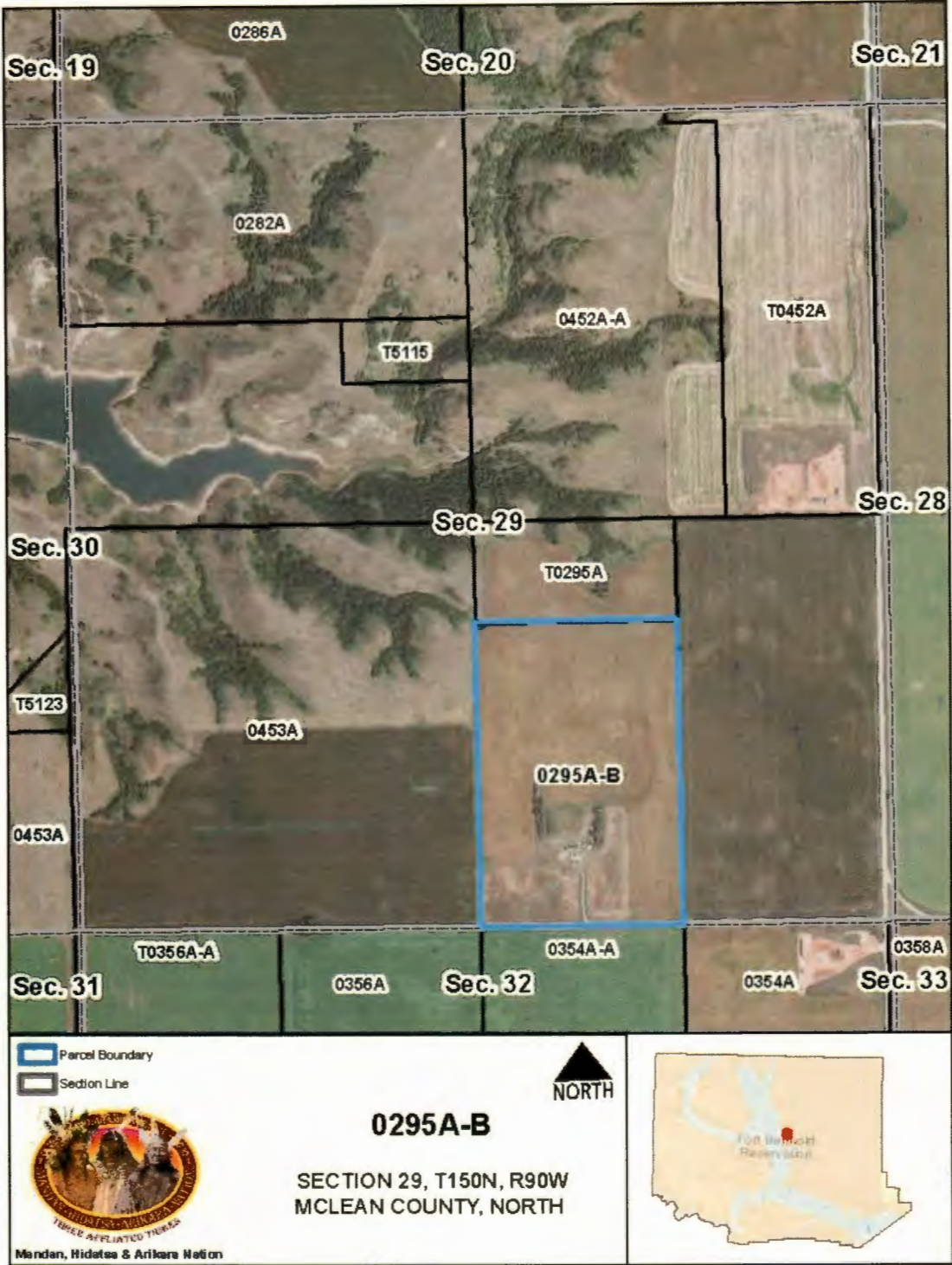
APPENDIX A.3









APPENDIX A.4





APPENDIX A.5



-  Parcel Boundary
-  Section Line



Mandan, Hidatsa & Arikara Nation

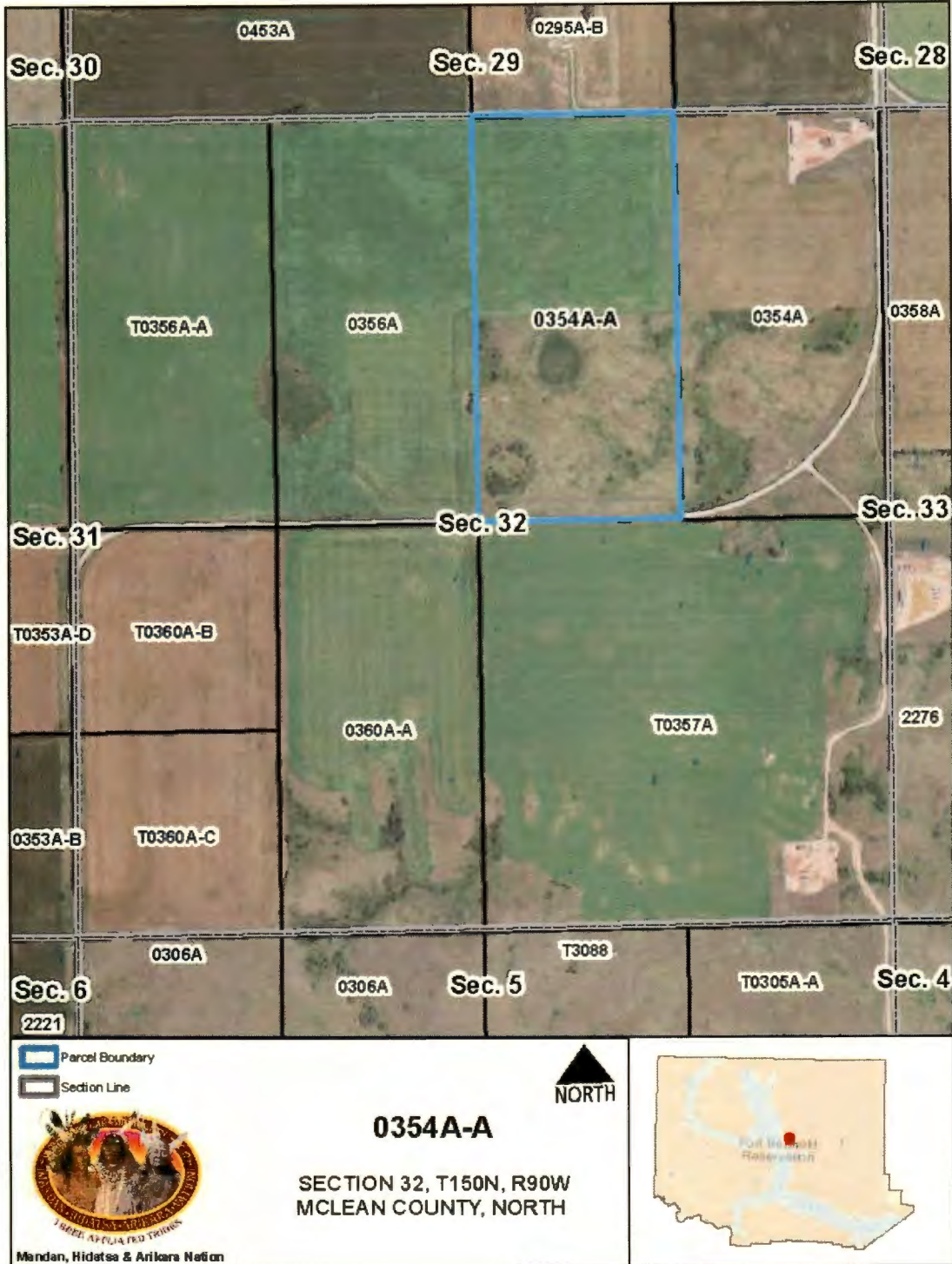
**0354A**

SECTION 32, T150N, R90W  
MCLEAN COUNTY, NORTH



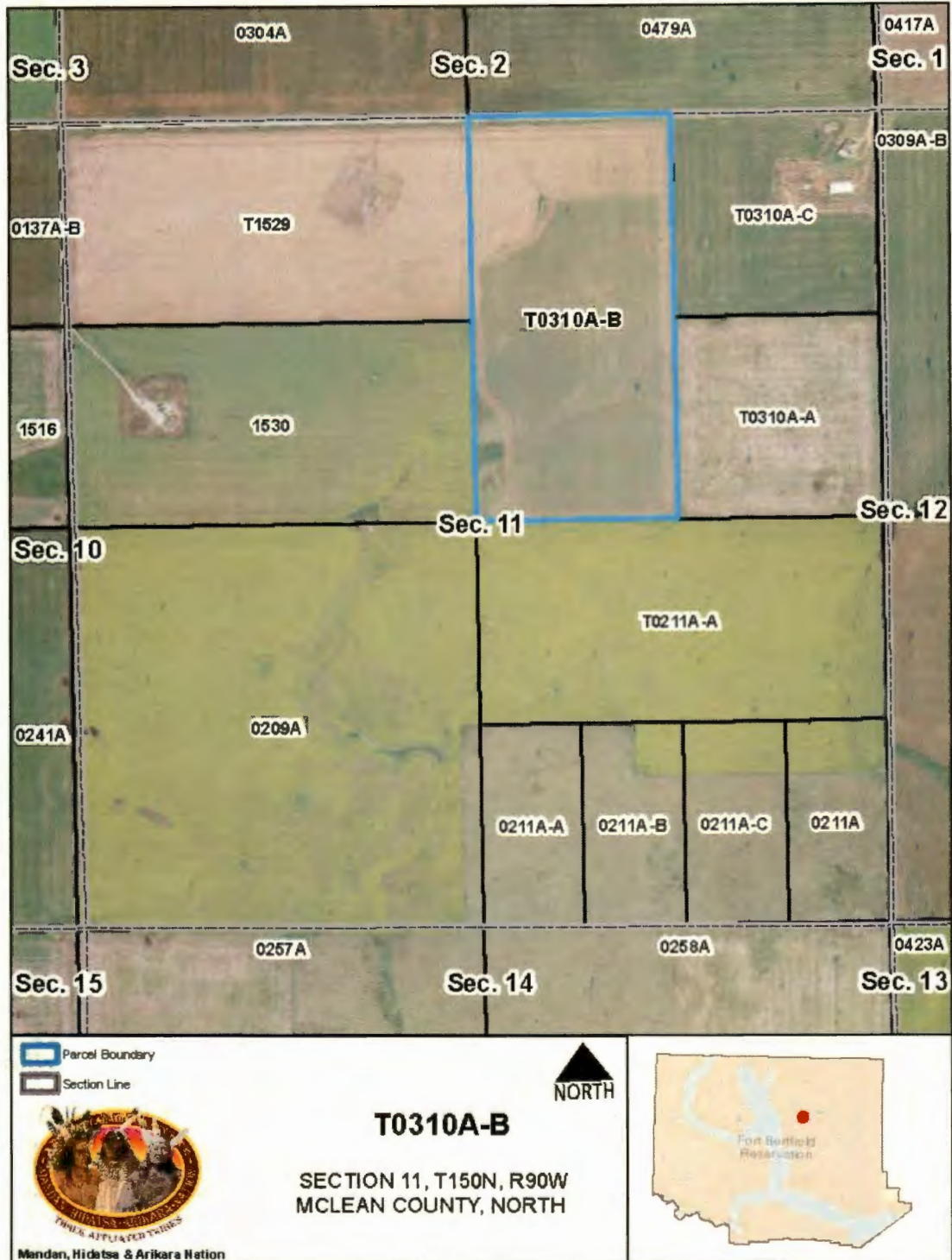


APPENDIX A.6



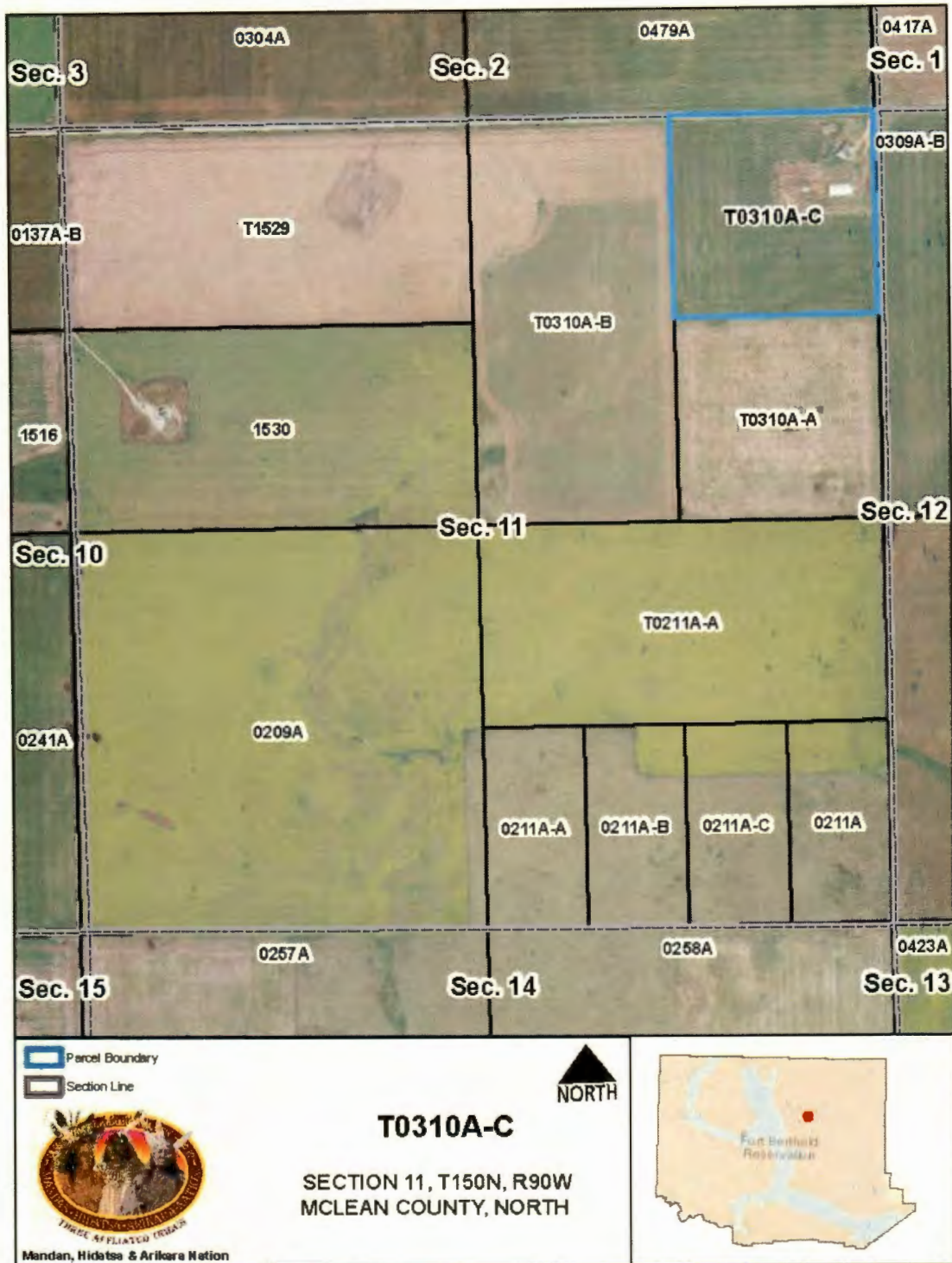


APPENDIX A.7





APPENDIX A.8



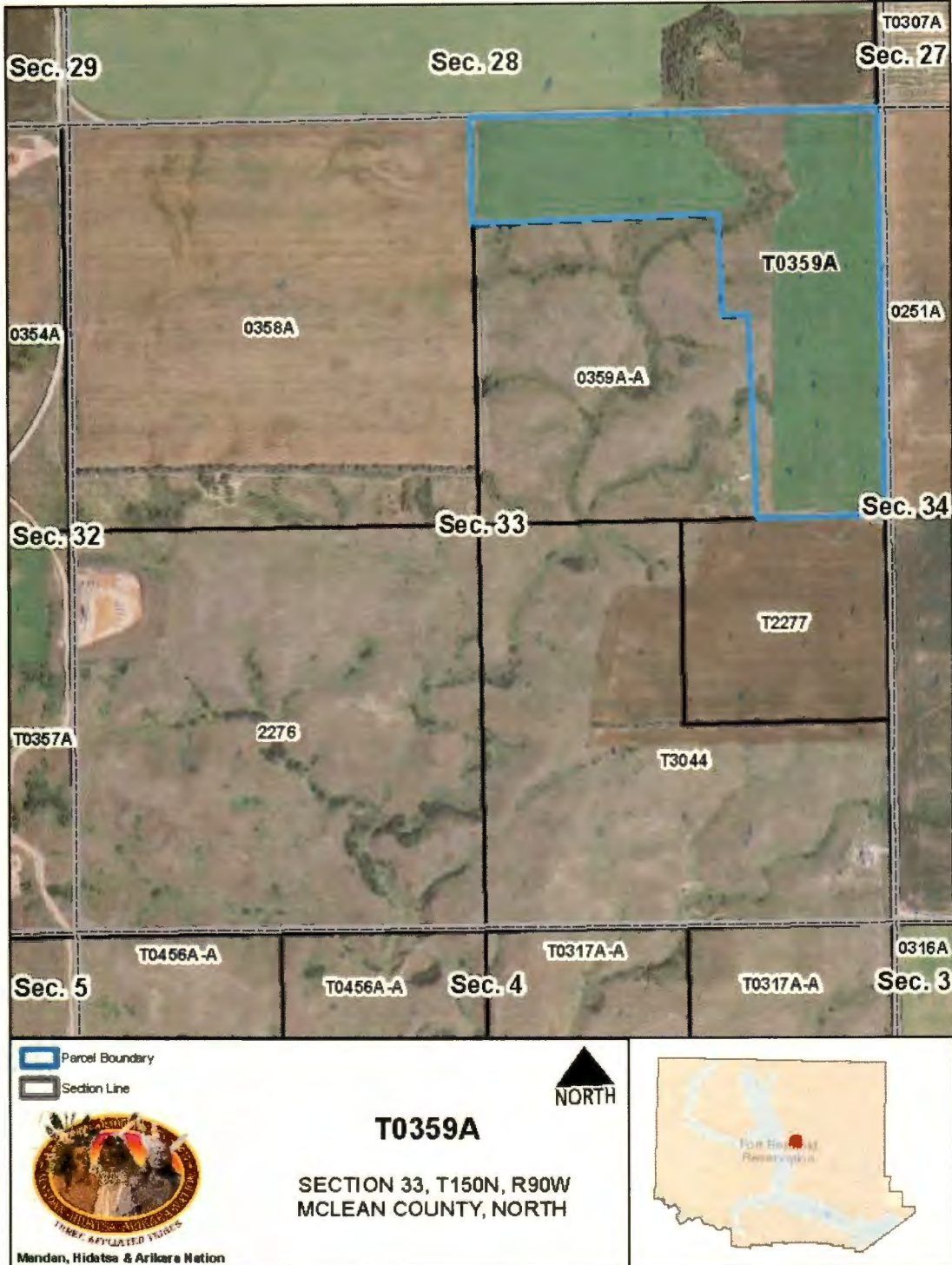


APPENDIX A.9



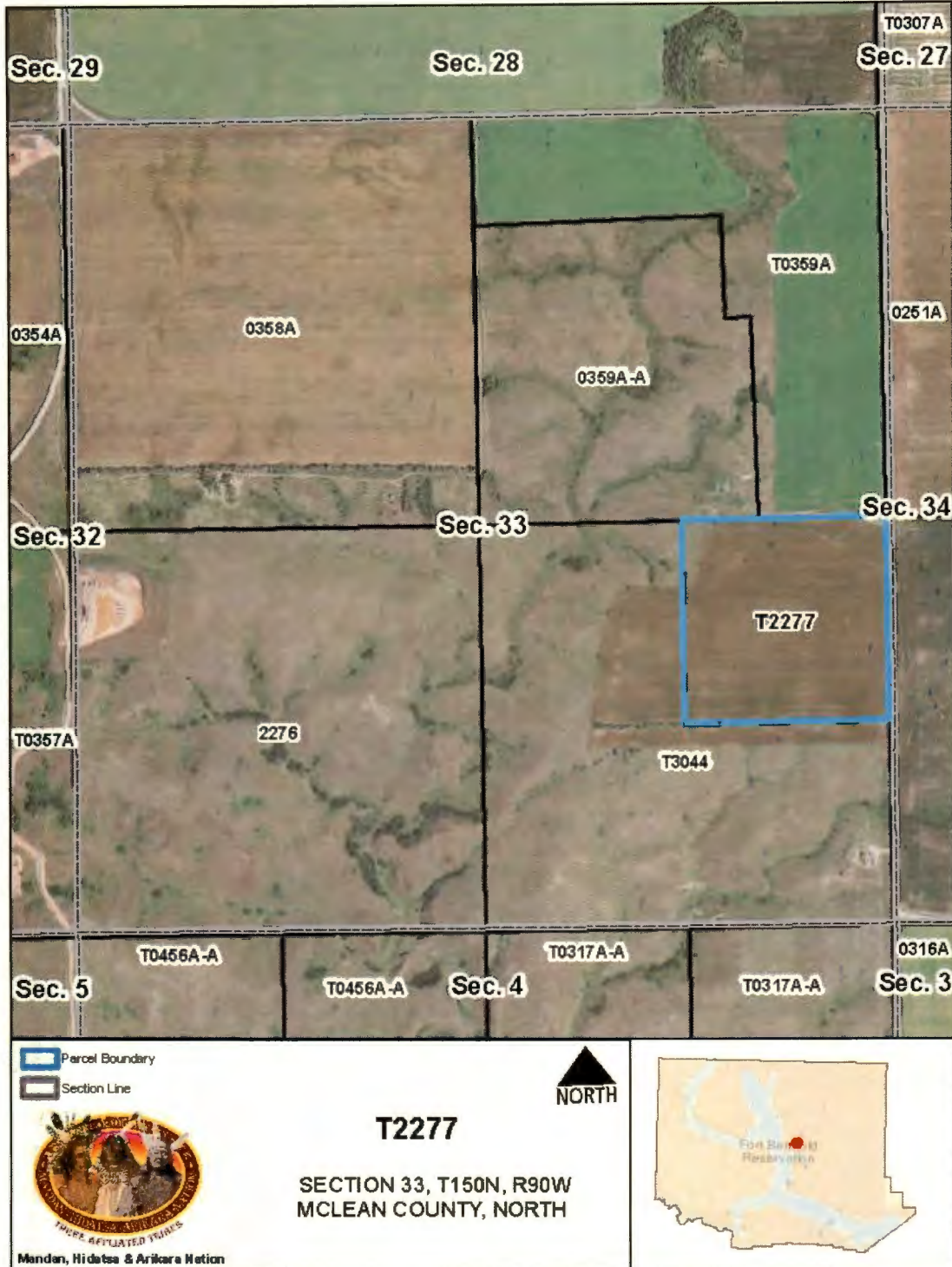


APPENDIX A.10





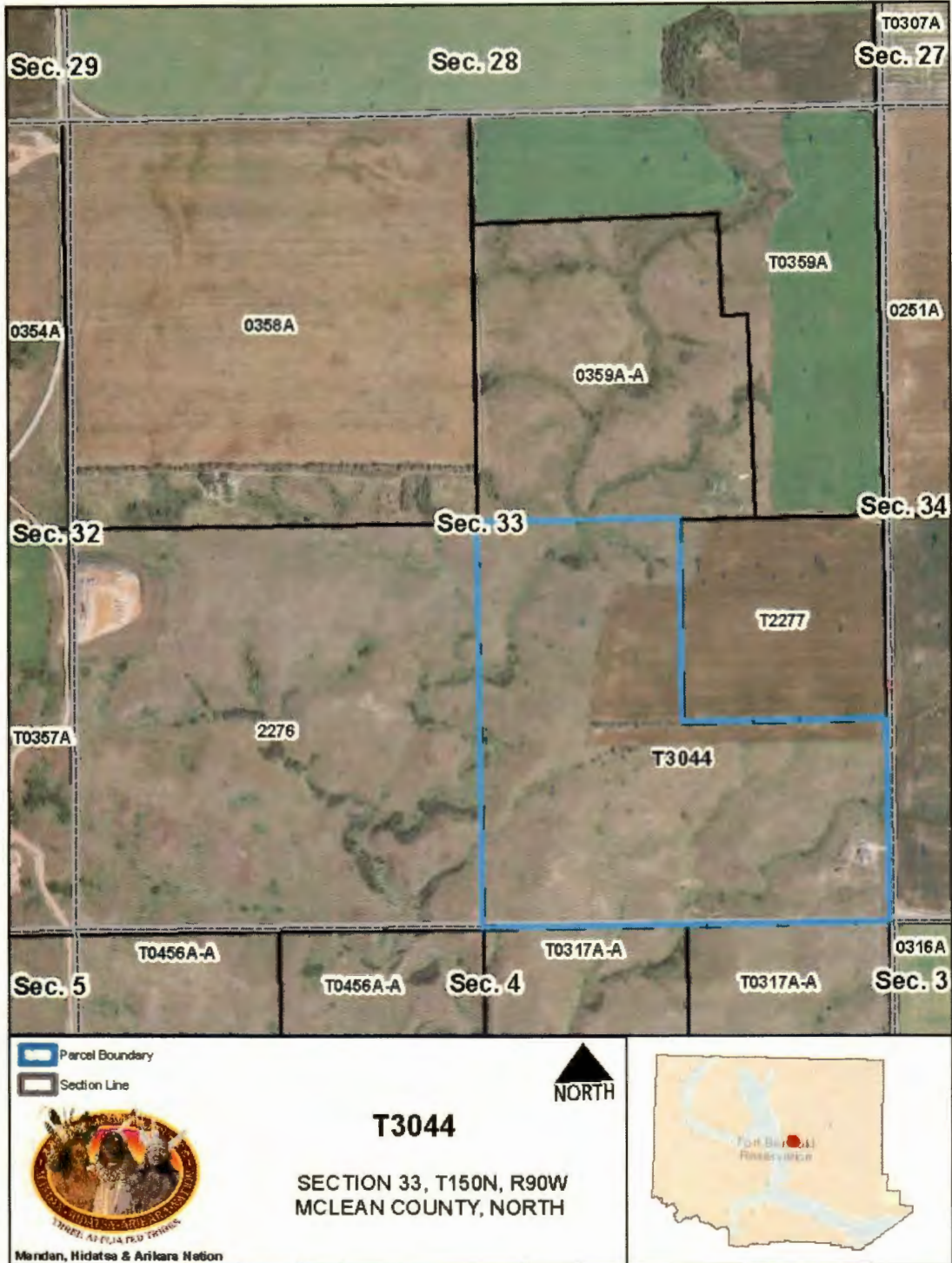
APPENDIX A.11







APPENDIX A.12



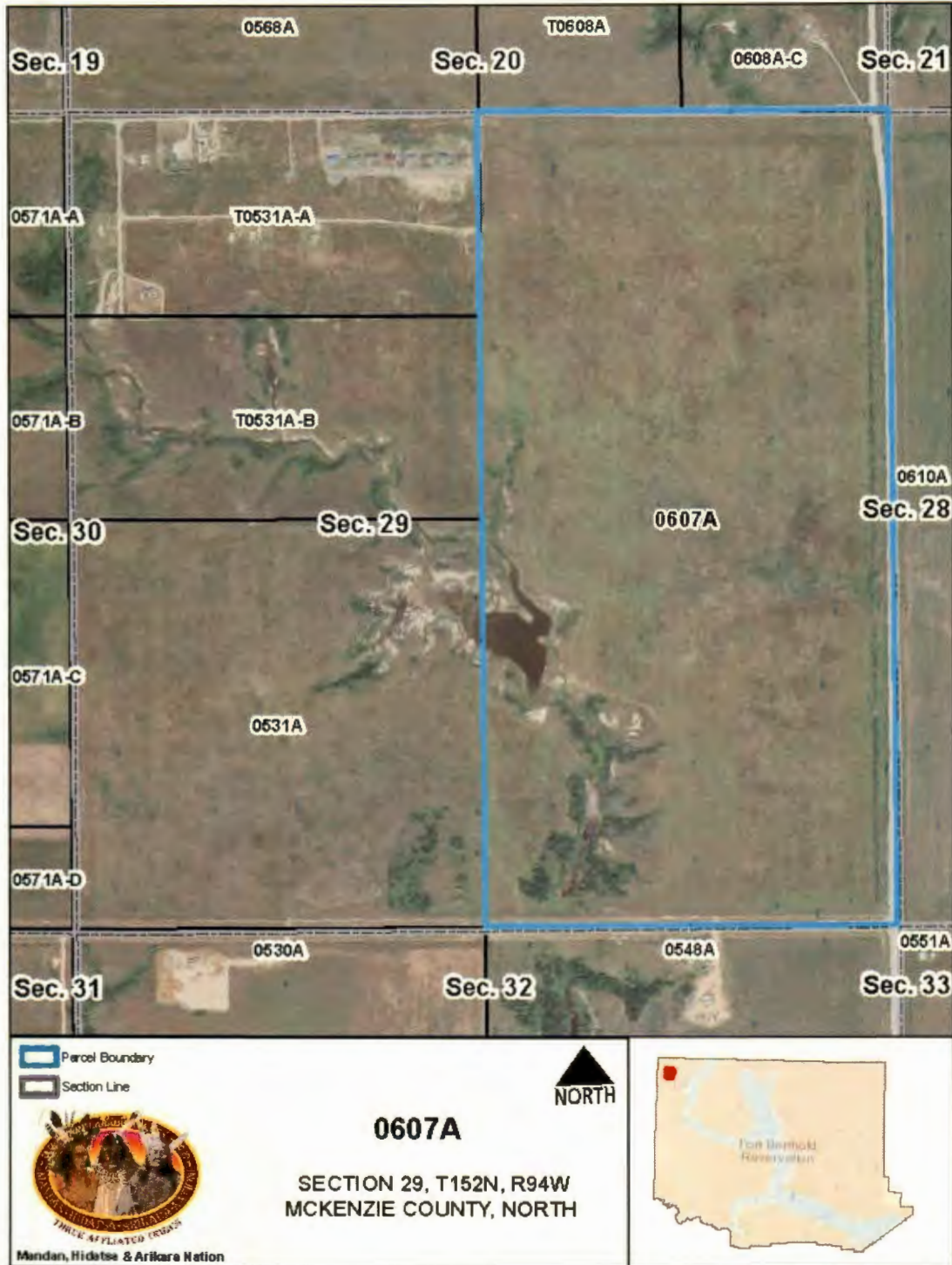


APPENDIX A.13





APPENDIX A.14







APPENDIX A.15





APPENDIX A.16



-  Parcel Boundary
-  Section Line



Mandan, Hidatsa & Arikara Nation

**0808A**  
 SECTION 8, T151N, R94W  
 MCKENZIE COUNTY, NORTH





APPENDIX A.17







APPENDIX A.19







APPENDIX A.20





APPENDIX A.21



Parcel Boundary  
 Section Line



Mandan, Hidatsa & Arikara Nation

**1131A-A**

SECTION 24, T150N, R95W  
MCKENZIE COUNTY, NORTH





APPENDIX A.22





APPENDIZ A.23





APPENDIX A.24

