

**RESOLUTION OF THE GOVERNING BODY OF
THE THREE AFFILIATED TRIBES
OF THE FORT BERTHOLD RESERVATION**

ORIGINAL

WHEREAS, This nation, having accepted the Indian Reorganization Act of June 18, 1934, and the Authority under said Act; and

WHEREAS, The constitution of the Three Affiliated Tribes generally authorizes and empowers the Tribal Business Council to engage in activities on behalf of and in the best interest of the Welfare and benefit of the Tribe and enrolled members thereof; and

WHEREAS, the Three Affiliated Tribes has identified 5.0 miles of new existing community housing streets that should be added to the Bureau of Indian Affairs (BIA) Road Inventory System. Attached are BIA Form-5704 and Plot Plan maps; and

NOW THEREFORE BE IT RESOLVED, that the Three Affiliated Tribes hereby requests the Bureau of Indian Affairs to add the following tribal housing streets to the BIA Road Inventory System. The Tribe grants a highway easement to the BIA for a width of seventy-five feet (75) or thirty-three feet (33) on each side from the centerline of each existing street. The Three Affiliated Tribes certifies that all housing streets identified in this tribal resolution are located on tribal trust land and are open to the public.

HOUSING STREETS: The following are names of housing streets and assigned new BIA Route number system for certain community housing streets.

1. BIA Route No. 3000, Mandaree School & Self Help Housing Streets, 2.5 miles paved. Change the Route Number from 0124 to 3000. Also separate each street to surface width condition.
2. BIA Route No. 3001, Mandaree Ridge Road and Housing streets, 2.1 miles paved. New housing streets.
3. BIA Route No. 3100, White Shield North Sector Housing Streets, 0.9 miles pave and gravel. Separate streets to surface width condition.
4. BIA Route No. 3101, White Shield School and Housing Streets, 0.6 miles paved.
5. BIA Route No. 3102, White Shield Sesame Housing Streets, 0.6 miles paved.
6. BIA Route No. 3200, Twin Buttes School and Housing Streets, 0.3 miles paved.
7. BIA Route No. 3201, Twin Buttes Elderly Housing Street, 0.2 mile paved. New housing street.
8. BIA Route No. 3202, Twin Buttes West Side Housing Streets, 0.5 miles pave and gravel streets.
9. BIA Route No. 3300, Four Bears Village Housing Streets, 1.4 mile paved. Separate streets to surface width condition.
10. BIA Route No. 3301, Four Bears Park Streets, 2.2 miles pave and gravel streets. Include streets adjacent to tribal administration area.
11. BIA Route No. 3302, Sand Hill Lane Housing Streets, 0.7 miles paved.
12. BIA Route No. 3303, Community College Streets, 1.0 miles paved.
13. BIA Route No. 3400, Bakersfield Housing Streets, 0.9 miles paved.

AREA A ABERDEEN

AGENCY 04 FORT BERTHOLD

RESERVATION 301 FORT BERTHOLD

ROUTE 3000 3 2.5
(NO.) (CLASS) (LENGTH MI.)

ESTIMATED COSTS FOR IMPROVEMENT
RIGHT OF WAY M-\$
INCIDENTAL CONSTRUCTION
GRADE & DRAIN
BASE AND/OR SURFACING
BRIDGES

TOTAL M-\$

DATE OF THIS REPORT 06/26/2002

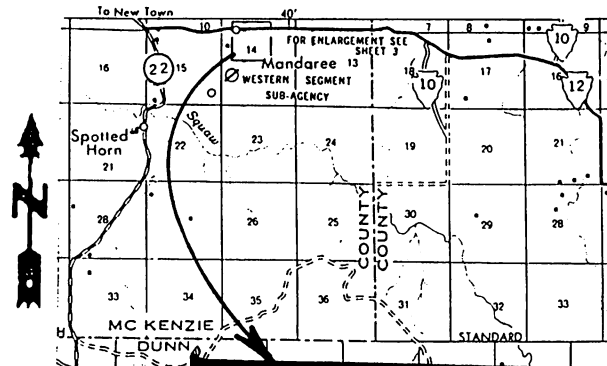
SECTION NUMBER
COUNTY 053
CONGRESSIONAL DISTRICT 01
STATE 38
LENGTH (MILES) 0.3
BRIDGE NUMBER (NO.)
LENGTH (L.F.)
SURFACE WIDTH (FT.)
SURFACE TYPE (21)
SHOULDER WIDTH (FT.)
SHOULDER TYPE (19)
ROADWAY WIDTH (FT.)
RIGHT OF WAY WIDTH (FT.)
ADT (EXISTING) (YR.)
(EXISTING) (V.P.D.)
(ESTIMATED FOR YEAR + 20 (V.P.D.)
ADEQUACY DESIGN STANDARD NO. (NO.)
FUTURE SURFACE TYPE
RATING
SURFACE WIDTH & TYPE (20 & 21)
SHOULDER WIDTH & TYPE (18 & 19)
STOPPING SIGHT DISTANCE (29)
PASSING SIGHT DISTANCE (27)
HORIZONTAL ALIGNMENT (0)
GRADIENT (0)
SAFETY STUDY (30)
FOUNDATION CONDITION (31)
WEARING SURFACE CONDITION (32)
DRAINAGE CONDITION (33)
SHOULDER CONDITION (34)
ADJUSTED RATING
EST. COST TO IMPROVE ---TOTAL---- (M-\$)
RIGHT OF WAY (M-\$)
INCIDENTAL CONSTRUCTION (M-\$)
GRADE & DRAIN (M-\$)
BASE AND/ OR SURFACING (M-\$)
BRIDGES (M-\$)

STREET SECTIONS

10	20	30	40	50	60	70
053	053	053	053	053	053	053
01	01	01	01	01	01	01
38	38	38	38	38	38	38
0.3	0.3	0.3	0.1	1.1	0.3	0.1

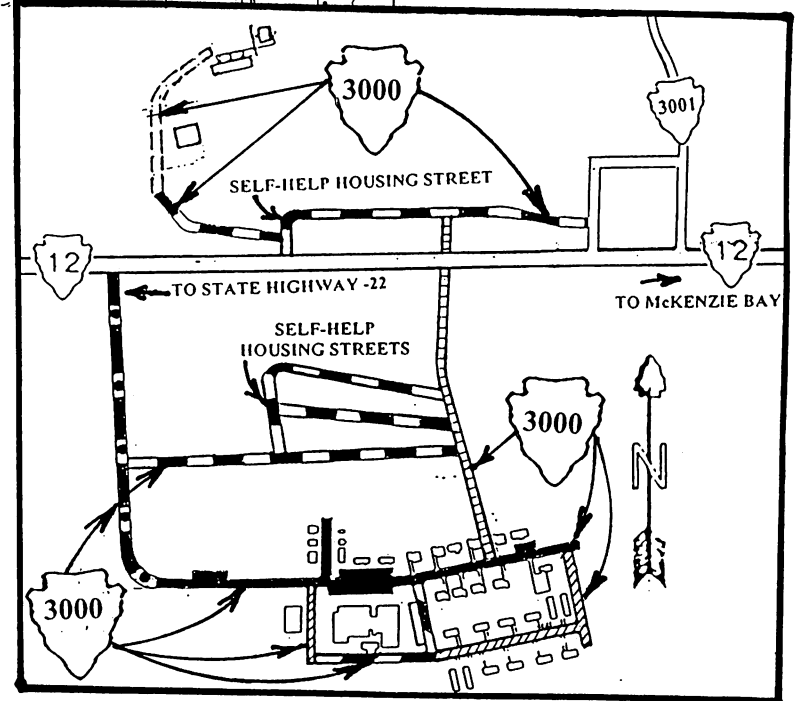
COUNTY MCKENZIE
T149N, R94W

FORT BERTHOLD INDIAN RESERVATION



BIA ROUTE NO. 3000
MANDAREE SCHOOL &
SELF-HELP HOUSING STREETS
06/26/2002

Atlas Map 3 of 3



TERRAIN TYPE

AREA A ABERDEEN

AGENCY 04 FORT BERTHOLD

RESERVATION 301 FORT BERTHOLD

ROUTE 3001 3 2.1
(NO.) (CLASS) (LENGTH MI.)

ESTIMATED COSTS FOR IMPROVEMENT
RIGHT OF WAY M-\$
INCIDENTAL CONSTRUCTION
GRADE & DRAIN
BASE AND/OR SURFACING
BRIDGES

TOTAL M-\$

DATE OF THIS REPORT 06/26/2002

SECTION NUMBER	10
COUNTY	053
CONGRESSIONAL DISTRICT	01
STATE	38
LENGTH (MILES)	2.1
BRIDGE NUMBER (NO.)	
LENGTH (L.F.)	
SURFACE WIDTH (FT.)	
SURFACE TYPE (21)	
SHOULDER WIDTH (FT.)	
SHOULDER TYPE (19)	
ROADWAY WIDTH (FT.)	
RIGHT OF WAY WIDTH (FT.)	
ADT (EXISTING) (YR.)	
(EXISTING) (V.P.D.)	
(ESTIMATED FOR YEAR + 20 (V.P.D.)	
ADEQUACY DESIGN STANDARD NO. (NO.)	
FUTURE SURFACE TYPE	

RATING

SURFACE WIDTH & TYPE	(20 & 21)
SHOULDER WIDTH & TYPE	(18 & 19)
STOPPING SIGHT DISTANCE	(29)
PASSING SIGHT DISTANCE	(27)
HORIZONTAL ALIGNMENT	(0)
GRADIENT	(0)
SAFETY STUDY	(30)
FOUNDATION CONDITION	(31)
WEARING SURFACE CONDITION	(32)
DRAINAGE CONDITION	(33)
SHOULDER CONDITION	(34)

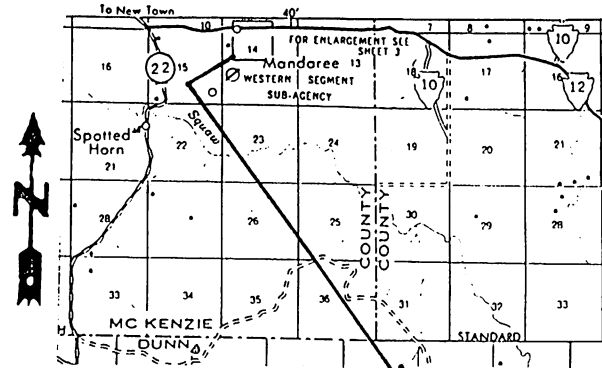
ADJUSTED RATING

EST. COST TO IMPROVE ---TOTAL----	(M-\$)
RIGHT OF WAY	(M-\$)
INCIDENTAL CONSTRUCTION	(M-\$)
GRADE & DRAIN	(M-\$)
BASE AND/ OR SURFACING	(M-\$)
BRIDGES	(M-\$)

TERRAIN TYPE

COUNTY MCKENZIE
T149N, R94W

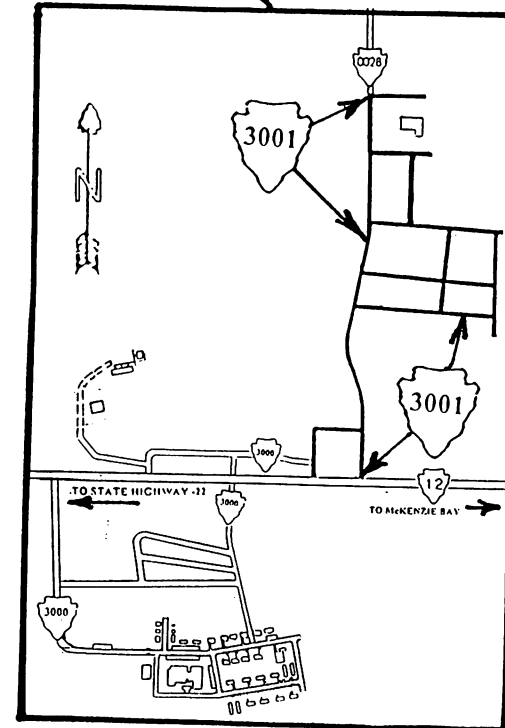
FORT BERTHOLD INDIAN RESERVATION



BIA ROUTE NO. 3001
MANDAREE RIDGE ROAD &
HOUSING STREETS

06/26/2002

Atlas Map 2 of 3



AREA A ABERDEEN

AGENCY 04 FORT BERTHOLD

RESERVATION 301 FORT BERTHOLD

ROUTE 3100 3 0.9
(NO.) (CLASS) (LENGTH MI.)

ESTIMATED COSTS FOR IMPROVEMENT
RIGHT OF WAY
INCIDENTAL CONSTRUCTION M-\$
GRADE & DRAIN
BASE AND/OR SURFACING
BRIDGES

TOTAL M-\$

DATE OF THIS REPORT 06/18/2002

SECTION NUMBER
COUNTY
CONGRESSIONAL DISTRICT
STATE
LENGTH (MILES)

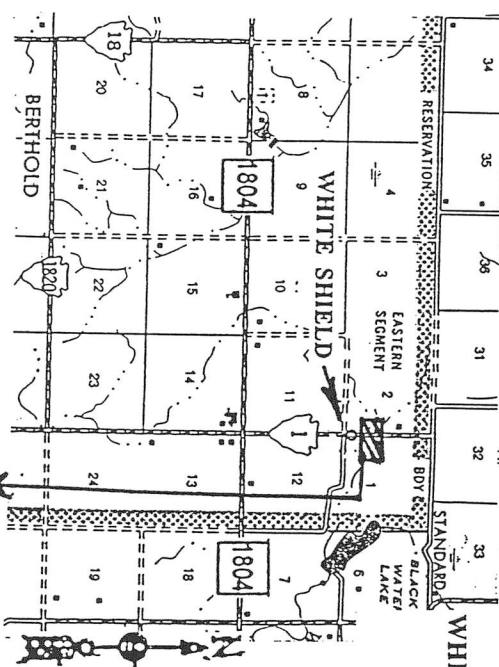
BRIDGE NUMBER (NO.)
LENGTH (L.F.)
SURFACE WIDTH (FT.)
SURFACE TYPE (21)
SHOULDER WIDTH (FT.)
SHOULDER TYPE (19)
ROADWAY WIDTH (FT.)
RIGHT OF WAY WIDTH (YR.)
ADT (EXISTING) (V.P.D.)
(EXISTING) (V.P.D.)
(ESTIMATED FOR YEAR + 20 (V.P.D.)
ADEQUACY DESIGN STANDARD NO. (NO.)
FUTURE SURFACE TYPE RATING

SURFACE WIDTH & TYPE (20 & 21)
SHOULDER WIDTH & TYPE (18 & 19)
STOPPING SIGHT DISTANCE (29)
PASSING SIGHT DISTANCE (27)
HORIZONTAL ALIGNMENT (0)
GRADIENT (0)
SAFETY STUDY (30)
FOUNDATION CONDITION (31)
WEARING SURFACE CONDITION (32)
DRAINAGE CONDITION (33)
SHOULDER CONDITION (34)
ADJUSTED RATING
EST. COST TO IMPROVE ---TOTAL---

RIGHT OF WAY (M-\$)
INCIDENTAL CONSTRUCTION (M-\$)
GRADE & DRAIN (M-\$)
BASE AND/OR SURFACING (M-\$)
BRIDGES (M-\$)
TERRAIN TYPE (M-\$)

COUNTY MCLEAN
TIA9N, R884

FORT BERTHOLD INDIAN RESERVATION

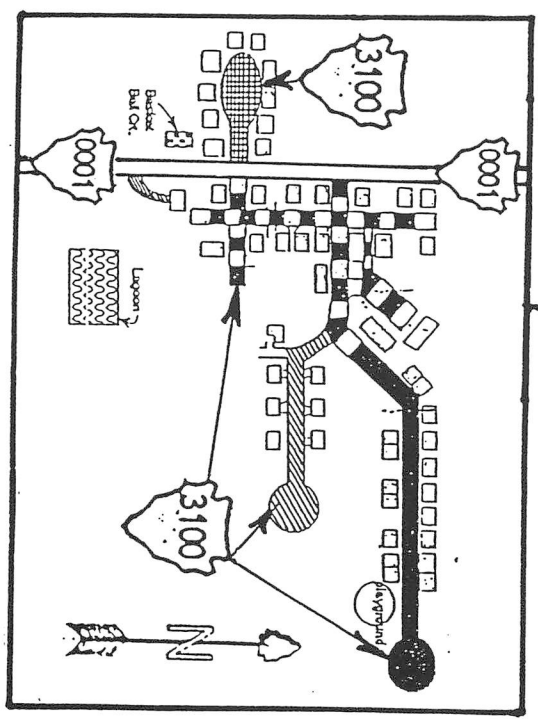


BIA ROUTE NO. 3100
WHITE SHIELD NORTH SECTOR
HOUSING STREETS

Atlas Map 3 of 3

06/18/2002

10	20	30	40
055	055	055	055
01	01	01	01
38	38	38	38
0.1	0.5	0.2	0.1



AREA A ABERDEEN

AGENCY 04 FORT BERTHOLD

RESERVATION 301 FORT BERTHOLD

ROUTE 3101 3 0.6
(NO.) (CLASS) (LENGTH MI.)

ESTIMATED COSTS FOR IMPROVEMENT
RIGHT OF WAY
INCIDENTAL CONSTRUCTION
GRADE & DRAIN
BASE AND/OR SURFACING
BRIDGES

TOTAL M-\$

DATE OF THIS REPORT 06/18/2002

SECTION NUMBER

COUNTY

CONGRESSIONAL DISTRICT

STATE

LENGTH

BRIDGE NUMBER

SURFACE WIDTH

SURFACE TYPE

SHOULDER WIDTH

SHOULDER TYPE

ROADWAY WIDTH

RIGHT OF WAY WIDTH

ADT (EXISTING)

(EXISTING)

(ESTIMATED FOR YEAR +20

ADEQUACY DESIGN STANDARD NO. (NO.)

FUTURE SURFACE TYPE

RATING

SURFACE WIDTH & TYPE

SHOULDER WIDTH & TYPE

STOPPING SIGHT DISTANCE

PASSING SIGHT DISTANCE

HORIZONTAL ALIGNMENT

GRADIENT

SAFETY STUDY

FOUNDATION CONDITION

WEARING SURFACE CONDITION

DRAINAGE CONDITION

SHOULDER CONDITION

ADJUSTED RATING

EST. COST TO IMPROVE ---TOTAL---

RIGHT OF WAY

INCIDENTAL CONSTRUCTION

GRADE & DRAIN

BASE AND/ OR SURFACING

BRIDGES

TERRAIN TYPE

(MILES)

(NO.)

(L.F.)

(FT.)

(FT.)

(FT.)

(FT.)

(FT.)

(FT.)

(FT.)

(FT.)

(FT.)

(FT.)

(FT.)

(FT.)

(FT.)

(FT.)

(FT.)

(FT.)

(FT.)

(FT.)

(FT.)

(FT.)

(FT.)

(FT.)

(FT.)

(FT.)

(FT.)

(FT.)

(FT.)

(FT.)

(FT.)

(FT.)

(FT.)

(FT.)

(FT.)

(FT.)

(FT.)

(FT.)

(FT.)

(FT.)

(FT.)

(FT.)

(FT.)

(FT.)

(FT.)

(FT.)

(FT.)

(FT.)

(FT.)

(FT.)

(FT.)

(FT.)

(FT.)

(FT.)

(FT.)

(FT.)

(FT.)

(FT.)

(FT.)

(FT.)

(FT.)

(FT.)

(FT.)

(FT.)

(FT.)

(FT.)

(FT.)

(FT.)

(FT.)

(FT.)

(FT.)

(FT.)

(FT.)

(FT.)

(FT.)

(FT.)

(FT.)

(FT.)

(FT.)

(FT.)

(FT.)

(FT.)

(FT.)

(FT.)

(FT.)

(FT.)

(FT.)

(FT.)

(FT.)

(FT.)

(FT.)

(FT.)

(FT.)

(FT.)

(FT.)

(FT.)

(FT.)

(FT.)

(FT.)

(FT.)

(FT.)

(FT.)

(FT.)

(FT.)

(FT.)

(FT.)

(FT.)

(FT.)

(FT.)

(FT.)

(FT.)

(FT.)

(FT.)

(FT.)

(FT.)

(FT.)

(FT.)

(FT.)

(FT.)

(FT.)

(FT.)

(FT.)

(FT.)

(FT.)

(FT.)

(FT.)

(FT.)

(FT.)

(FT.)

(FT.)

(FT.)

(FT.)

(FT.)

(FT.)

(FT.)

(FT.)

(FT.)

(FT.)

(FT.)

(FT.)

(FT.)

(FT.)

(FT.)

(FT.)

(FT.)

(FT.)

(FT.)

(FT.)

(FT.)

(FT.)

(FT.)

(FT.)

(FT.)

(FT.)

(FT.)

(FT.)

(FT.)

(FT.)

(FT.)

(FT.)

(FT.)

(FT.)

(FT.)

(FT.)

(FT.)

(FT.)

(FT.)

(FT.)

(FT.)

(FT.)

(FT.)

(FT.)

(FT.)

(FT.)

(FT.)

(FT.)

(FT.)

(FT.)

(FT.)

(FT.)

(FT.)

(FT.)

(FT.)

(FT.)

(FT.)

(FT.)

(FT.)

(FT.)

(FT.)

(FT.)

(FT.)

(FT.)

(FT.)

(FT.)

(FT.)

(FT.)

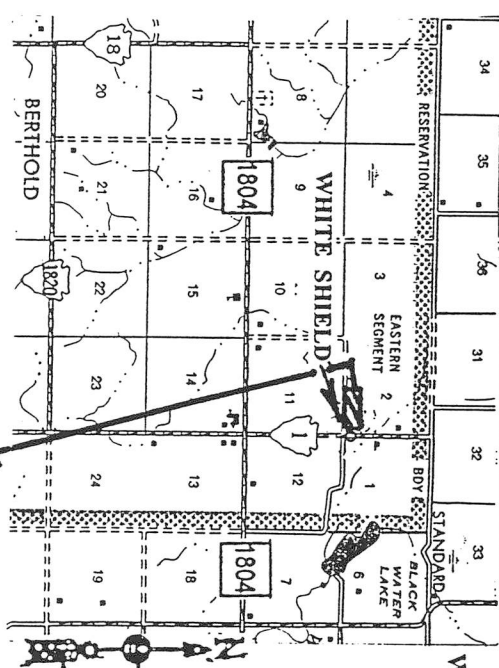
(FT.)

(FT.)

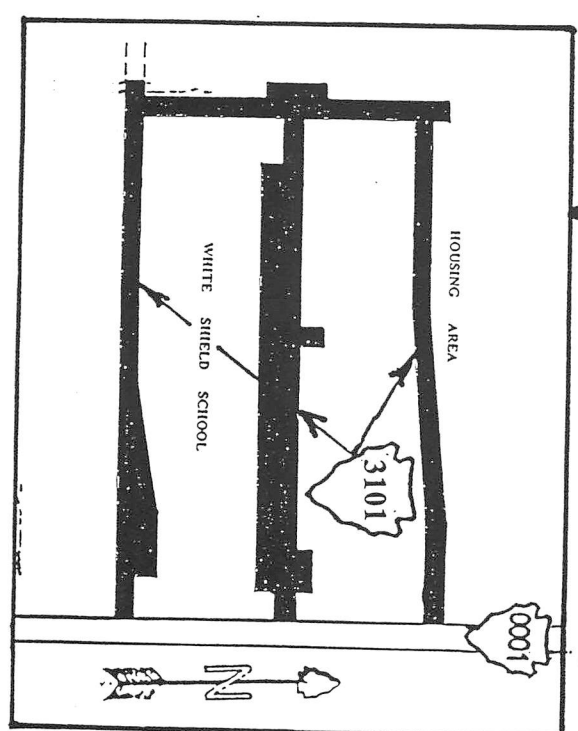
(FT.)

COUNTY MCLEAN
T149N, R989W

FORT BERTHOLD INDIAN RESERVATION
RESERVATION
EASTERN SEGMENT
BOY
BLACK WATER LAKE
STANDARD



BIA ROUTE NO. 3101
WHITE SHIELD SCHOOL
& HOUSING STREETS
Atlas Map 3 of 3
06/18/2002



SEC.



10
055
01
38
0.6

AREA A ABERDEEN

AGENCY 04 FORT BERTHOLD

RESERVATION 301 FORT BERTHOLD

ROUTE 3102 3 0.6
(NO.) (CLASS) (LENGTH MI.)

ESTIMATED COSTS FOR IMPROVEMENT
RIGHT OF WAY
INCIDENTAL CONSTRUCTION M-\$
GRADE & DRAIN
BASE AND/OR SURFACING
BRIDGES

TOTAL M-\$

DATE OF THIS REPORT 06/18/2002

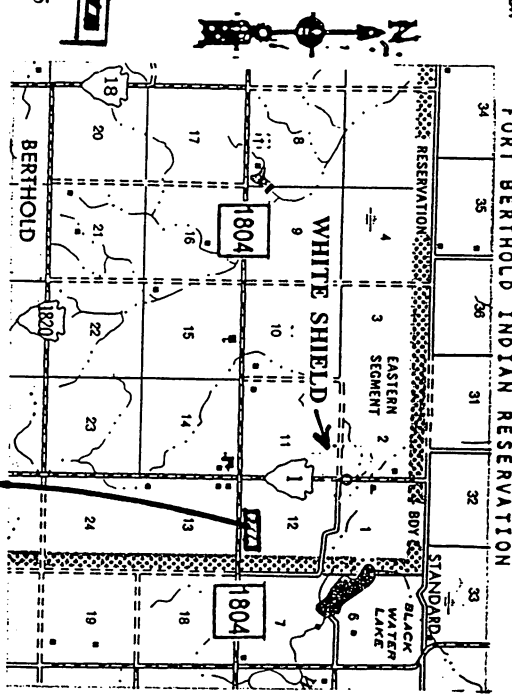
SECTION NUMBER
COUNTY
CONGRESSIONAL DISTRICT
STATE
LENGTH (MILES)
BRIDGE NUMBER (NO.)

SURFACE LENGTH (L.F.)
SURFACE WIDTH (FT.)
SHOULDER WIDTH (FT.)
SHOULDER TYPE (FT.)
ROADWAY WIDTH (FT.)
RIGHT OF WAY WIDTH (FT.)
ADT (EXISTING) (YR.)
(EXISTING)
(ESTIMATED FOR YEAR + 20 (V.P.D.)
ADEQUACY DESIGN STANDARD NO. (V.P.D.)
FUTURE SURFACE TYPE (NO.)
RATING

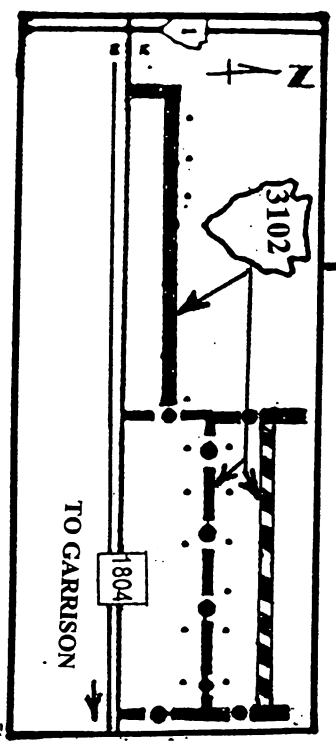
SURFACE WIDTH & TYPE (20 & 21)
SHOULDER WIDTH & TYPE (18 & 19)
STOPPING SIGHT DISTANCE (29)
PASSING SIGHT DISTANCE (27)
HORIZONTAL ALIGNMENT (0)
GRADIENT (0)
SAFETY STUDY (0)
FOUNDATION CONDITION (30)
WEARING SURFACE CONDITION (31)
DRAINAGE CONDITION (32)
SHOULDER CONDITION (33)
ADJUSTED RATING (34)
EST. COST TO IMPROVE ---TOTAL---- (M-\$)
RIGHT OF WAY (M-\$)
INCIDENTAL CONSTRUCTION (M-\$)
GRADE & DRAIN (M-\$)
BASE AND/OR SURFACING (M-\$)
BRIDGES (M-\$)
TERRAIN TYPE (M-\$)

COUNTY McLEAN
T149N, R88W

10	20	30
055	055	055
01	01	01
38	38	38
0.2	0.3	0.1



BIA ROUTE NO. 3102
SESAME HOUSING STREETS
Atlas Map 3 of 3
06/18/2002



AREA A ABERDEEN

AGENCY 04 FORT BERTHOLD

RESERVATION 301 FORT BERTHOLD

ROUTE 3200 3 (NO.) (CLASS) (LENGTH MI.) 0.3

ESTIMATED COSTS FOR IMPROVEMENT
RIGHT OF WAY M-\$
INCIDENTAL CONSTRUCTION

GRADE & DRAIN
BASE AND/OR SURFACING
BRIDGES

TOTAL M-\$

DATE OF THIS REPORT 06/24/2002

SECTION NUMBER

COUNTY

CONGRESSIONAL DISTRICT

STATE

LENGTH

BRIDGE NUMBER

LENGTH

(NO.)

(L.F.)

(FT.)

SURFACE WIDTH

(FT.)

SHOULDER WIDTH

(FT.)

SHOULDER TYPE

(FT.)

ROADWAY WIDTH

(FT.)

RIGHT OF WAY WIDTH

(YR.)

(EXISTING)

(V.P.D.)

(ESTIMATED FOR YEAR + 20 (V.P.D.)

AVIQUACY DESIGN STANDARD NO. (NO.)

FUTURE SURFACE TYPE

RATING

SURFACE WIDTH & TYPE (20 & 21)

SHOULDER WIDTH & TYPE (18 & 19)

STOPPING SIGHT DISTANCE (29)

HORIZONTAL ALIGNMENT (27)

GRADIENT (0)

SAFETY STUDY (30)

FOUNDATION CONDITION (31)

WEARING SURFACE CONDITION (32)

DRAINAGE CONDITION (33)

SHOULDER CONDITION (34)

ADJUSTED RATING (M-\$) -----

RIGHT OF WAY (M-\$)

INCIDENTAL CONSTRUCTION (M-\$)

GRADE & DRAIN (M-\$)

BASE AND/OR SURFACING (M-\$)

BRIDGES (M-\$)

TERRAIN TYPE (M-\$)

- (M-\$) TERRAIN TYPE
- (M-\$) BRIDGES
- (M-\$) BASE AND/OR SURFACING
- (M-\$) GRADE & DRAIN
- (M-\$) INCIDENTAL CONSTRUCTION
- (M-\$) RIGHT OF WAY
- (M-\$) EST. COST TO IMPROVE -----
- (34) ADJUSTED RATING
- (33) SHOULDER CONDITION
- (32) DRAINAGE CONDITION
- (31) WEARING SURFACE CONDITION
- (30) FOUNDATION CONDITION
- (0) SAFETY STUDY
- (0) GRADIENT
- (0) HORIZONTAL ALIGNMENT
- (27) STOPPING SIGHT DISTANCE
- (29) PASSING SIGHT DISTANCE
- (18 & 19) SHOULDER WIDTH & TYPE
- (20 & 21) SURFACE WIDTH & TYPE

- (NO.) RATING
- (NO.) FUTURE SURFACE TYPE
- (NO.) AVIQUACY DESIGN STANDARD NO. (NO.)
- (V.P.D.) (ESTIMATED FOR YEAR + 20 (V.P.D.)
- (V.P.D.)
- (YR.) (EXISTING)
- (YR.)
- (FT.) RIGHT OF WAY WIDTH
- (FT.) ROADWAY WIDTH
- (FT.) SHOULDER WIDTH
- (FT.) SHOULDER TYPE
- (FT.) SURFACE WIDTH
- (FT.) SURFACE TYPE
- (L.F.) SURFACE WIDTH
- (NO.) LENGTH
- (MILES) BRIDGE NUMBER

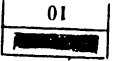
0.3

38

01

025

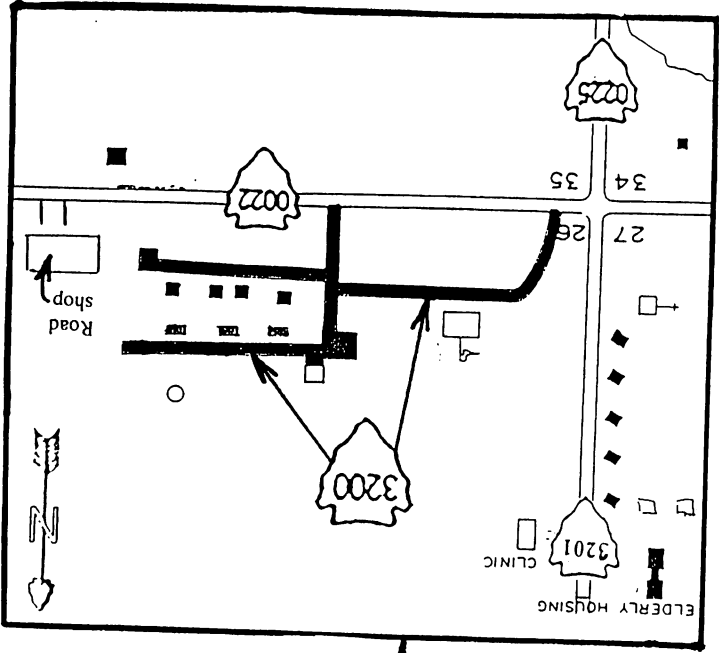
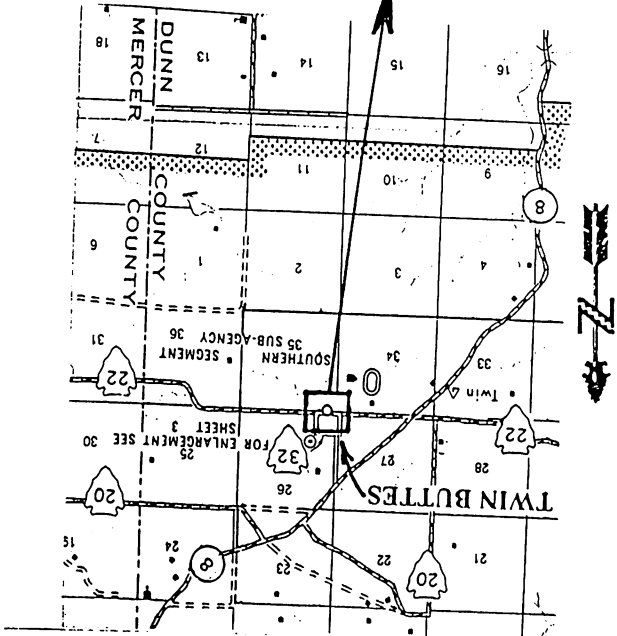
10



COUNTY DUNN
T147N, R91W

FORT BERTHOLD INDIAN RESERVATION

BIA ROUTE NO. 3200
TWIN BUTTES SCHOOL
& HOUSING STREETS
06/24/2002
Atlas Map 2 of 3



AREA A ABERDEEN

AGENCY 04 FORT BERTHOLD

RESERVATION 301 FORT BERTHOLD

ROUTE 3201 (NO.) (CLASS) (LENGTH MI.)
0.2 3

ESTIMATED COSTS FOR IMPROVEMENT
RIGHT OF WAY M-\$
INCIDENTAL CONSTRUCTION
GRADE & DRAIN
BASE AND/OR SURFACING
BRIDGES

TOTAL M-\$

DATE OF THIS REPORT 06/24/2002

SECTION NUMBER

COUNTY

CONGRESSIONAL DISTRICT

STATE

LENGTH

BRIDGE NUMBER

(NO.) (MILES)

ADT (EXISTING)

(YR.) (EXISTING)

(V.P.D.) (V.P.D.)
(ESTIMATED FOR YEAR + 20)

ADUACY DESIGN STANDARD NO. (NO.)
FUTURE SURFACE TYPE

(20 & 21) SURFACE WIDTH & TYPE

(18 & 19) SHOULDER WIDTH & TYPE

(29) STOPPING SIGHT DISTANCE

(27) PASSING SIGHT DISTANCE

(0) HORIZONTAL ALIGNMENT

(0) GRADIENT

(30) SAFETY STUDY

(31) FOUNDATION CONDITION

(32) WEARING SURFACE CONDITION

(33) DRAINAGE CONDITION

(34) SHOULDER CONDITION

(M-\$) EST. COST TO IMPROVE ---TOTAL---

(M-\$) RIGHT OF WAY

(M-\$) INCIDENTAL CONSTRUCTION

(M-\$) GRADE & DRAIN

(M-\$) BASE AND/OR SURFACING

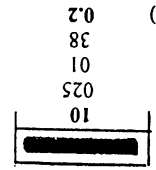
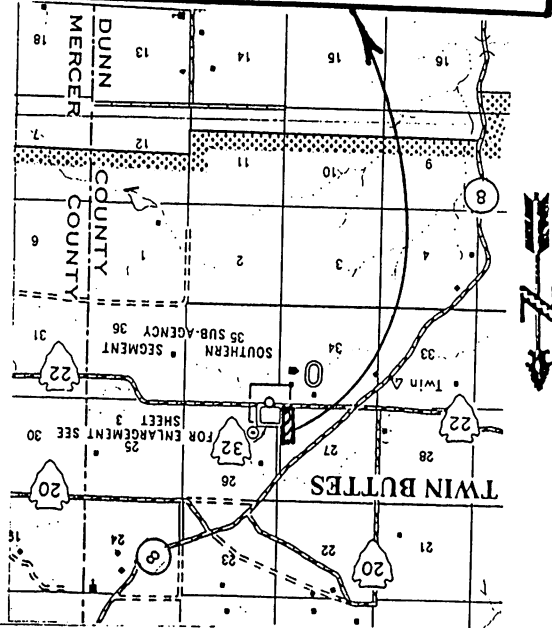
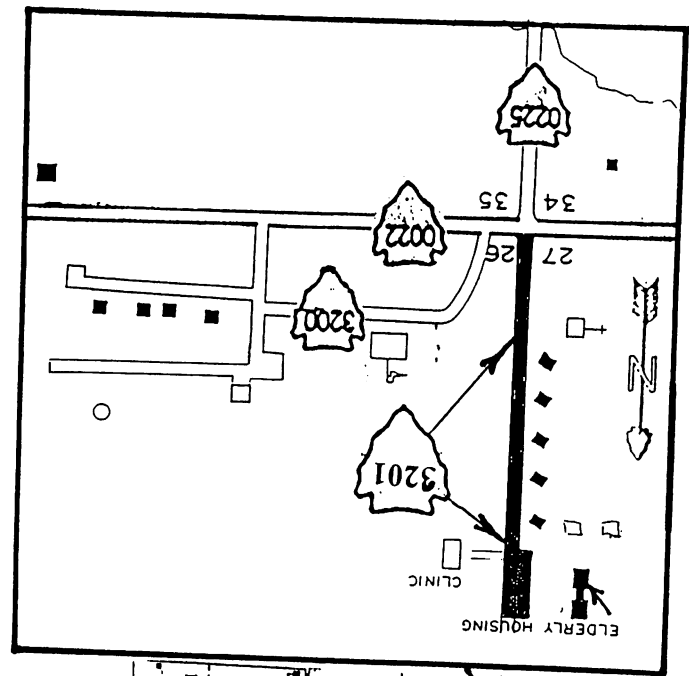
(M-\$) BRIDGES

(M-\$) TERRAIN TYPE

COUNTY DUNN
1147N, R91W

FORT BERTHOLD INDIAN RESERVATION

BIA ROUTE NO. 3201
ELDERLY HOUSING STREET
06/24/2002
Atlas Map 2 of 3



AREA A ABERDEEN

AGENCY 04 FORT BERTHOLD

RESERVATION 301 FORT BERTHOLD

ROUTE 3202 3 0.5
(NO.) (CLASS) (LENGTH MI.)

ESTIMATED COSTS FOR IMPROVEMENT
RIGHT OF WAY M-\$
INCIDENTAL CONSTRUCTION
GRADE & DRAIN
BASE AND/OR SURFACING
BRIDGES

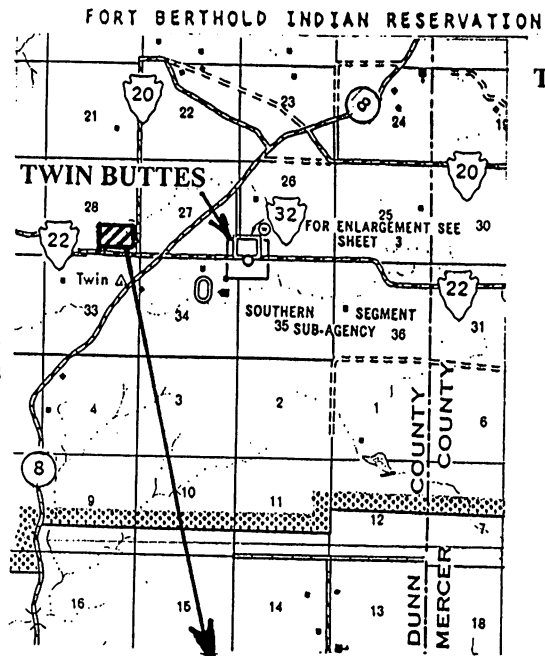
TOTAL M-\$

DATE OF THIS REPORT 06/24/2002

SECTION NUMBER	
COUNTY	025
CONGRESSIONAL DISTRICT	01
STATE	38
LENGTH (MILES)	0.4
BRIDGE NUMBER (NO.)	
LENGTH (L.F.)	
SURFACE WIDTH (FT.)	
SURFACE TYPE (21)	
SHOULDER WIDTH (FT.)	
SHOULDER TYPE (19)	
ROADWAY WIDTH (FT.)	
RIGHT OF WAY WIDTH (FT.)	
ADT (EXISTING) (YR.)	
(EXISTING) (V.P.D.)	
(ESTIMATED FOR YEAR + 20) (V.P.D.)	
ADEQUACY DESIGN STANDARD NO. (NO.)	
FUTURE SURFACE TYPE	
RATING	
SURFACE WIDTH & TYPE (20 & 21)	
SHOULDER WIDTH & TYPE (18 & 19)	
STOPPING SIGHT DISTANCE (29)	
PASSING SIGHT DISTANCE (27)	
HORIZONTAL ALIGNMENT (0)	
GRADIENT (0)	
SAFETY STUDY (30)	
FOUNDATION CONDITION (31)	
WEARING SURFACE CONDITION (32)	
DRAINAGE CONDITION (33)	
SHOULDER CONDITION (34)	
ADJUSTED RATING	
EST. COST TO IMPROVE ---TOTAL---- (M-\$)	
RIGHT OF WAY (M-\$)	
INCIDENTAL CONSTRUCTION (M-\$)	
GRADE & DRAIN (M-\$)	
BASE AND/ OR SURFACING (M-\$)	
BRIDGES (M-\$)	
TERRAIN TYPE	

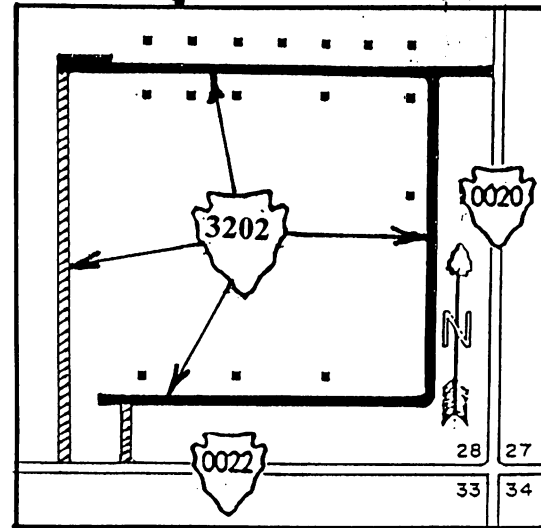
10	20
025	025
01	01
38	38
0.4	0.1

COUNTY DUNN
T147W, R91W



**BIA ROUTE NO. 3202
TWIN BUTTES WEST SIDE
HOUSING STREETS**

06/24/2002
Atlas Map 2 of 3

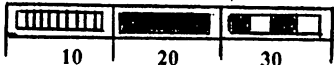


AREA A ABERDEEN
 AGENCY 04 FORT BERTHOLD
 RESERVATION 301 FORT BERTHOLD
 ROUTE 3300 3 1.4
 (NO.) (CLASS) (LENGTH MI.)

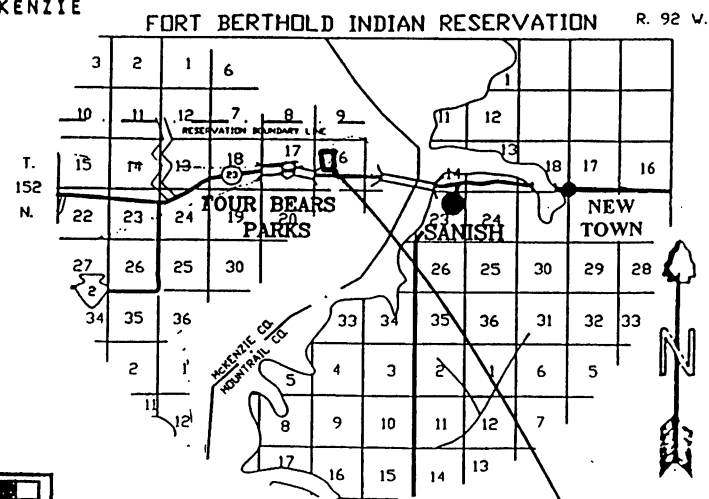
ESTIMATED COSTS FOR IMPROVEMENT
 RIGHT OF WAY M-\$
 INCIDENTAL CONSTRUCTION
 GRADE & DRAIN
 BASE AND/OR SURFACING
 BRIDGES
 TOTAL M-\$

DATE OF THIS REPORT 06/14/2002

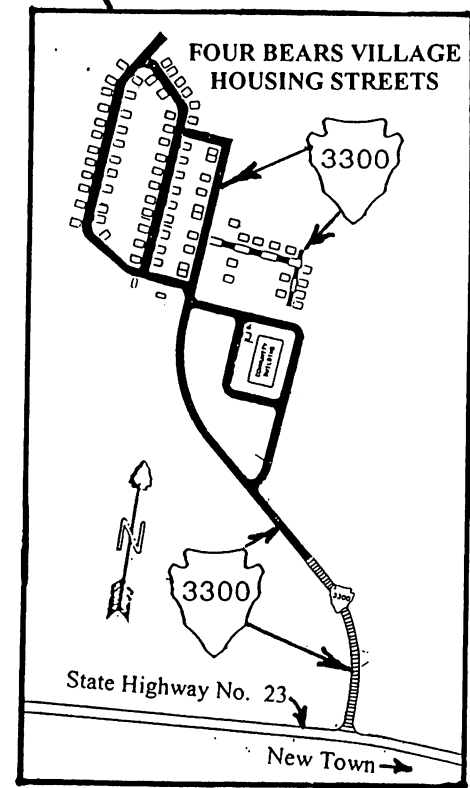
SECTION NUMBER	10	20	30
COUNTY	053	053	053
CONGRESSIONAL DISTRICT	01	01	01
STATE	38	38	38
LENGTH (MILES)	0.1	1.2	0.1
BRIDGE NUMBER (NO.)			
LENGTH (L.F.)			
SURFACE WIDTH (FT.)			
SURFACE TYPE (21)			
SHOULDER WIDTH (FT.)			
SHOULDER TYPE (19)			
ROADWAY WIDTH (FT.)			
RIGHT OF WAY WIDTH (FT.)			
ADT (EXISTING) (YR.)			
(EXISTING) (V.P.D.)			
(ESTIMATED FOR YEAR + 20) (V.P.D.)			
ADEQUACY DESIGN STANDARD NO. (NO.)			
FUTURE SURFACE TYPE			
RATING			
SURFACE WIDTH & TYPE (20 & 21)			
SHOULDER WIDTH & TYPE (18 & 19)			
STOPPING SIGHT DISTANCE (29)			
PASSING SIGHT DISTANCE (27)			
HORIZONTAL ALIGNMENT (0)			
GRADIENT (0)			
SAFETY STUDY (30)			
FOUNDATION CONDITION (31)			
WEARING SURFACE CONDITION (32)			
DRAINAGE CONDITION (33)			
SHOULDER CONDITION (34)			
ADJUSTED RATING			
EST. COST TO IMPROVE ---TOTAL---- (M-\$)			
RIGHT OF WAY (M-\$)			
INCIDENTAL CONSTRUCTION (M-\$)			
GRADE & DRAIN (M-\$)			
BASE AND/OR SURFACING (M-\$)			
BRIDGES (M-\$)			
TERRAIN TYPE			



COUNTY MCKENZIE
 T152W, R93W



BIA ROUTE NO. 3300
 FOUR BEARS VILLAGE
 HOUSING STREETS
 06/14/2002
 Atlas Map 1 of 3



AREA A ABERDEEN
 AGENCY 04 FORT BERTHOLD
 RESERVATION 301 FORT BERTHOLD
 ROUTE 3301 3 2.2
 (NO.) (CLASS) (LENGTH MI.)

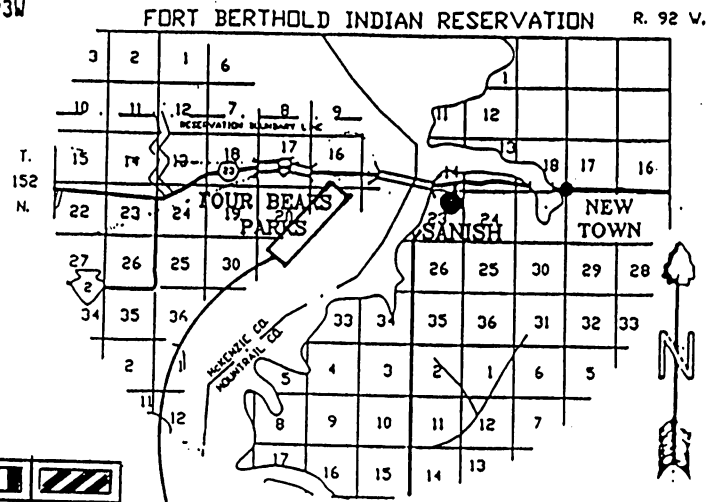
ESTIMATED COSTS FOR IMPROVEMENT
 RIGHT OF WAY M-\$
 INCIDENTAL CONSTRUCTION
 GRADE & DRAIN
 BASE AND/OR SURFACING
 BRIDGES
 TOTAL M-\$

DATE OF THIS REPORT 06/12/2002

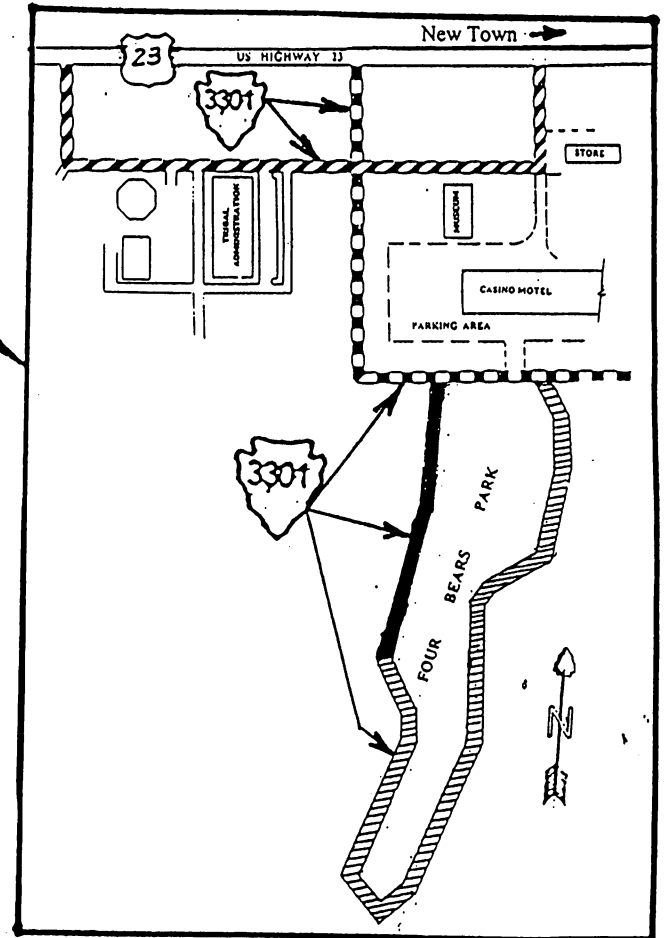
SECTION NUMBER
 COUNTY
 CONGRESSIONAL DISTRICT
 STATE
 LENGTH (MILES)
 BRIDGE NUMBER (NO.)
 LENGTH (L.F.)
 SURFACE WIDTH (FT.)
 SURFACE TYPE (21)
 SHOULDER WIDTH (FT.)
 SHOULDER TYPE (19)
 ROADWAY WIDTH (FT.)
 RIGHT OF WAY WIDTH (FT.)
 ADT (EXISTING) (YR.)
 (EXISTING) (V.P.D.)
 (ESTIMATED FOR YEAR + 20 (V.P.D.)
 ADEQUACY DESIGN STANDARD NO. (NO.)
 FUTURE SURFACE TYPE
 RATING
 SURFACE WIDTH & TYPE (20 & 21)
 SHOULDER WIDTH & TYPE (18 & 19)
 STOPPING SIGHT DISTANCE (29)
 PASSING SIGHT DISTANCE (27)
 HORIZONTAL ALIGNMENT (0)
 GRADIENT (0)
 SAFETY STUDY (30)
 FOUNDATION CONDITION (31)
 WEARING SURFACE CONDITION (32)
 DRAINAGE CONDITION (33)
 SHOULDER CONDITION (34)
 ADJUSTED RATING
 EST. COST TO IMPROVE ---TOTAL---- (M-\$)
 RIGHT OF WAY (M-\$)
 INCIDENTAL CONSTRUCTION (M-\$)
 GRADE & DRAIN (M-\$)
 BASE AND/OR SURFACING (M-\$)
 BRIDGES (M-\$)
 TERRAIN TYPE

10	20	30	40
053	053	053	053
01	01	01	01
38	38	38	38
0.3	1.3	0.2	0.4

COUNTY MCKENZIE
 T152N, R93W



BIA ROUTE NO. 3301
 FOUR BEARS PARK STREETS
 06/12/2002
 Atlas 1 of 3



AREA A ABERDEEN
 AGENCY 04 FORT BERTHOLD
 RESERVATION 301 FORT BERTHOLD
 ROUTE 3302 3 0.7
 (NO.) (CLASS) (LENGTH MI.)

ESTIMATED COSTS FOR IMPROVEMENT
 RIGHT OF WAY M-\$
 INCIDENTAL CONSTRUCTION
 GRADE & DRAIN
 BASE AND/OR SURFACING
 BRIDGES

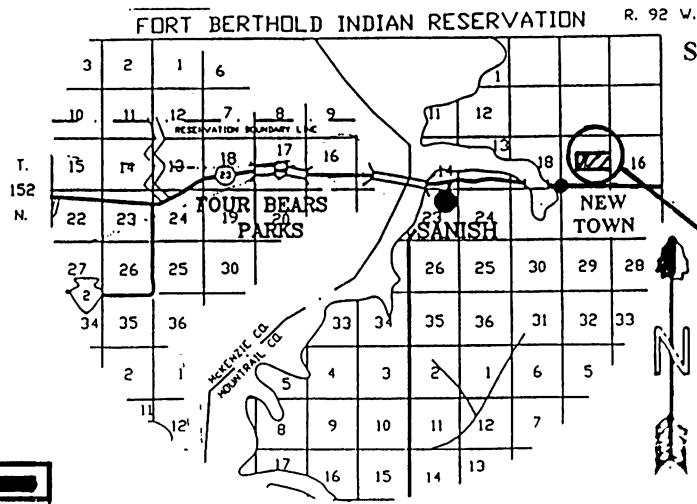
TOTAL M-\$

DATE OF THIS REPORT 06/10/2002

SECTION NUMBER
 COUNTY
 CONGRESSIONAL DISTRICT
 STATE
 LENGTH (MILES)
 BRIDGE NUMBER (NO.)
 LENGTH (L.F.)
 SURFACE WIDTH (FT.)
 SURFACE TYPE (21)
 SHOULDER WIDTH (FT.)
 SHOULDER TYPE (19)
 ROADWAY WIDTH (FT.)
 RIGHT OF WAY WIDTH (FT.)
 ADT (EXISTING) (YR.)
 (EXISTING) (V.P.D.)
 (ESTIMATED FOR YEAR + 20) (V.P.D.)
 ADEQUACY DESIGN STANDARD NO. (NO.)
 FUTURE SURFACE TYPE
 RATING

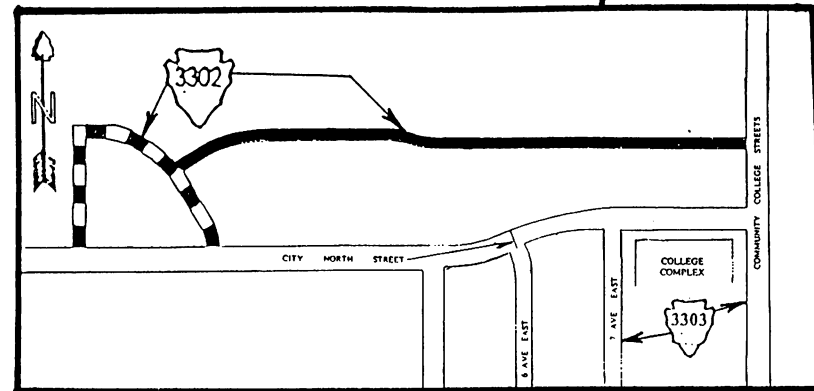
10	20
061	061
01	01
38	38
0.3	0.4

SURFACE WIDTH & TYPE (20 & 21)
 SHOULDER WIDTH & TYPE (18 & 19)
 STOPPING SIGHT DISTANCE (29)
 PASSING SIGHT DISTANCE (27)
 HORIZONTAL ALIGNMENT (0)
 GRADIENT (0)
 SAFETY STUDY (30)
 FOUNDATION CONDITION (31)
 WEARING SURFACE CONDITION (32)
 DRAINAGE CONDITION (33)
 SHOULDER CONDITION (34)
 ADJUSTED RATING
 EST. COST TO IMPROVE ---TOTAL---- (M-\$)
 RIGHT OF WAY (M-\$)
 INCIDENTAL CONSTRUCTION (M-\$)
 GRADE & DRAIN (M-\$)
 BASE AND/ OR SURFACING (M-\$)
 BRIDGES (M-\$)
 TERRAIN TYPE



BIA ROUTE NO. 3302
 SAND HILL LANE HOUSING STREETS
 6/10/2002

Atlas I of 3



AREA A ABERDEEN

AGENCY 04 FORT BERTHOLD

RESERVATION 301 FORT BERTHOLD

ROUTE 3303 3 1.0
(NO.) (CLASS) (LENGTH MI.)

ESTIMATED COSTS FOR IMPROVEMENT
RIGHT OF WAY
INCIDENTAL CONSTRUCTION M-\$
GRADE & DRAIN
BASE AND/OR SURFACING
BRIDGES

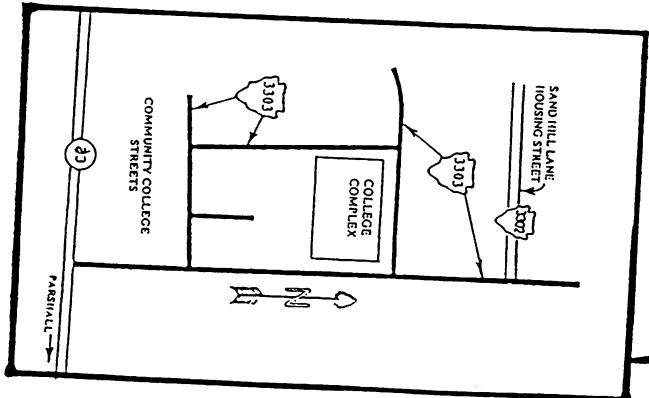
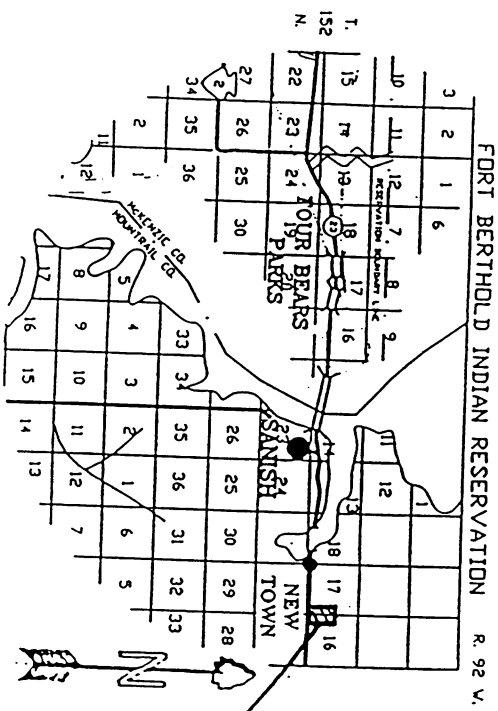
TOTAL M-\$

DATE OF THIS REPORT 06/07/2002

SECTION NUMBER 10
COUNTY 061
CONGRESSIONAL DISTRICT 01
STATE 38
LENGTH 1.0
BRIDGE NUMBER
LENGTH (MILES)
SURFACE WIDTH (NO.)
SURFACE TYPE (L.F.)
SURFACE TYPE (FT.)
SHOULDER WIDTH (21)
SHOULDER TYPE (FT.)
ROADWAY WIDTH (19)
RIGHT OF WAY WIDTH (FT.)
ADT (EXISTING) (YR.)
(ESTIMATED) (V.P.D.)
ADEQUACY DESIGN STANDARD NO. (V.P.D.)
FUTURE SURFACE TYPE (NO.)
RATING

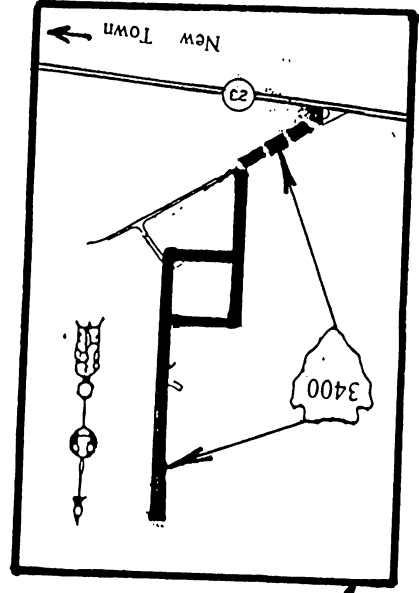
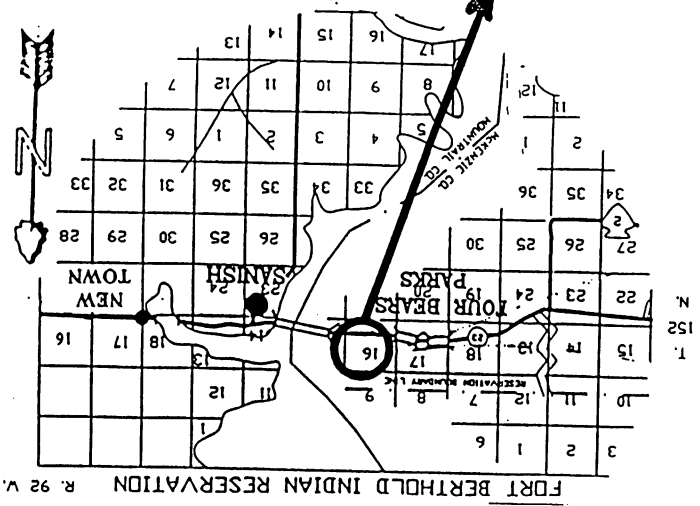
SURFACE WIDTH & TYPE (20 & 21)
SHOULDER WIDTH & TYPE (18 & 19)
STOPPING SIGHT DISTANCE (29)
PASSING SIGHT DISTANCE (27)
HORIZONTAL ALIGNMENT (0)
GRADIENT (0)
SAFETY STUDY (0)
FOUNDATION CONDITION (30)
WEARING SURFACE CONDITION (31)
DRAINAGE CONDITION (32)
SHOULDER CONDITION (33)
ADJUSTED RATING (34)

EST. COST TO IMPROVE ---TOTAL--- (M-\$)
RIGHT OF WAY (M-\$)
INCIDENTAL CONSTRUCTION (M-\$)
GRADE & DRAIN (M-\$)
BASE AND/OR SURFACING (M-\$)
BRIDGES (M-\$)
TERRAIN TYPE (M-\$)



BIA ROUTE NO. 3303
COMMUNITY COLLEGE STREETS
Atlas 1 of 3
06/07/2002

BIA ROUTE NO. 3400
BAKERSFIELD HOUSING STREETS
 Atlas Map 1 of 1
 05/24/2002



- (M-\$) EST. COST TO IMPROVE ---TOTAL---
- (M-\$) RIGHT OF WAY
- (M-\$) INCIDENTAL CONSTRUCTION
- (M-\$) GRADE & DRAIN
- (M-\$) BASE AND/OR SURFACING
- (M-\$) BRIDGES
- (M-\$) TERRAIN TYPE
- (0) SAFETY STUDY
- (0) GRADIENT
- (0) HORIZONTAL ALIGNMENT
- (27) PASSING SIGHT DISTANCE
- (29) STOPPING SIGHT DISTANCE
- (18 & 19) SHOULDER WIDTH & TYPE
- (20 & 21) SURFACE WIDTH & TYPE
- (30) FOUNDATION CONDITION
- (31) WEARING SURFACE CONDITION
- (32) DRAINAGE CONDITION
- (33) SHOULDER CONDITION
- (34) ADJUSTED RATING

- (NO.) BRIDGE NUMBER
- (L.F.) SURFACE WIDTH
- (FT.) SURFACE TYPE
- (21) SHOULDER WIDTH
- (FT.) SHOULDER TYPE
- (19) ROADWAY WIDTH
- (FT.) RIGHT OF WAY WIDTH
- (FT.) ADT (EXISTING)
- (V.P.D.) (EXISTING)
- (V.P.D.) (ESTIMATED FOR YEAR + 20)
- (V.P.D.) ADEQUACY DESIGN STANDARD NO.
- (NO.) FUTURE SURFACE TYPE
- (NO.) RATING
- (20 & 21) SURFACE WIDTH & TYPE
- (18 & 19) SHOULDER WIDTH & TYPE
- (29) STOPPING SIGHT DISTANCE
- (27) PASSING SIGHT DISTANCE
- (0) HORIZONTAL ALIGNMENT
- (0) GRADIENT
- (0) SAFETY STUDY
- (30) FOUNDATION CONDITION
- (31) WEARING SURFACE CONDITION
- (32) DRAINAGE CONDITION
- (33) SHOULDER CONDITION
- (34) ADJUSTED RATING

10	053	01	38	0.1
20	053	01	38	0.8

AREA A ABERDEEN
 AGENCY 04 FORT BERTHOLD
 RESERVATION 301 FORT BERTHOLD
 ROUTE 3400 3 0.9
 (NO.) (CLASS) (LENGTH MI.)
 ESTIMATED COSTS FOR IMPROVEMENT M-\$
 RIGHT OF WAY
 INCIDENTAL CONSTRUCTION
 GRADE & DRAIN
 BASE AND/OR SURFACING
 BRIDGES
 TOTAL M-\$
 DATE OF THIS REPORT 05/24/2002
 SECTION NUMBER
 COUNTY
 CONGRESSIONAL DISTRICT
 STATE
 LENGTH
 BRIDGE NUMBER
 (MILES)

AREA A ABERDEEN
 AGENCY 04 FORT BERTHOLD
 RESERVATION 301 FORT BERTHOLD

ROUTE 3500 3 1.6
 (NO.) (CLASS) (LENGTH MI.)

ESTIMATED COSTS FOR IMPROVEMENT
 RIGHT OF WAY
 INCIDENTAL CONSTRUCTION
 GRADE & DRAIN
 BASE AND/OR SURFACING
 BRIDGES

TOTAL M-\$

DATE OF THIS REPORT 06/10/2002

SECTION NUMBER
 COUNTY
 CONGRESSIONAL DISTRICT
 STATE
 LENGTH
 BRIDGE NUMBER

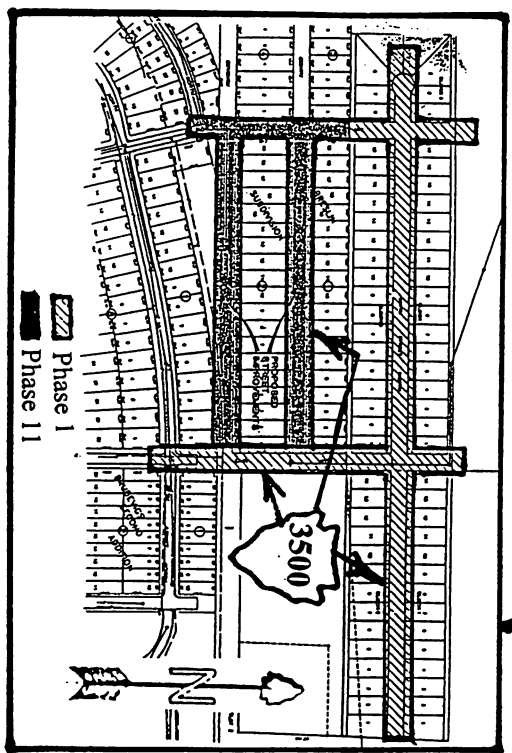
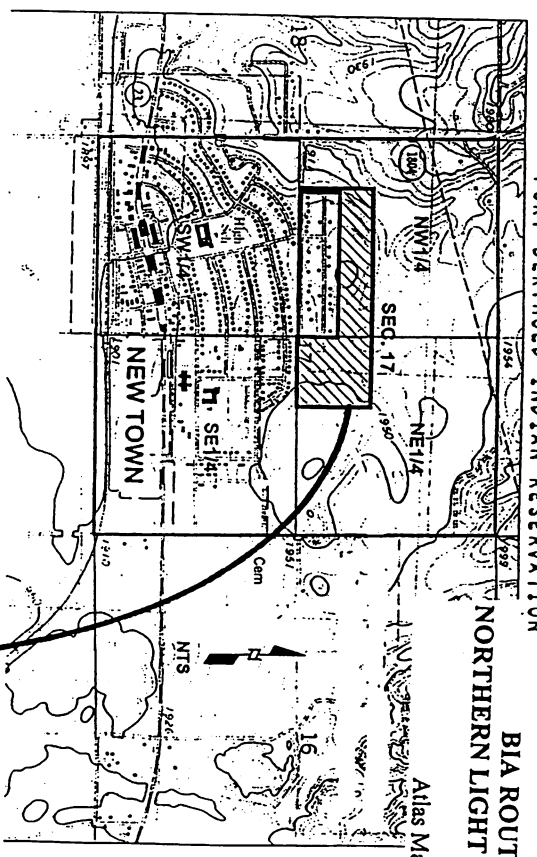
(MILES)
 (NO.)
 (L.F.)
 (F.T.)
 (FT.)
 (FT.)
 (FT.)
 (FT.)
 (FT.)
 (YR.)
 (V.P.D.)
 (V.P.D.)
 (NO.)

SURFACE WIDTH & TYPE (20 & 21)
 SHOULDER WIDTH & TYPE (18 & 19)
 STOPPING SIGHT DISTANCE (29)
 PASSING SIGHT DISTANCE (27)
 HORIZONTAL ALIGNMENT (0)
 GRADIENT (0)
 SAFETY STUDY (30)
 FOUNDATION CONDITION (31)
 WEARING SURFACE CONDITION (32)
 DRAINAGE CONDITION (33)
 SHOULDER CONDITION (34)
 ADJUSTED RATING
 EST. COST TO IMPROVE ---TOTAL--- (M-\$)
 RIGHT OF WAY (M-\$)
 INCIDENTAL CONSTRUCTION (M-\$)
 GRADE & DRAIN (M-\$)
 BASE AND/OR SURFACING (M-\$)
 BRIDGES (M-\$)
 TERRAIN TYPE (M-\$)

COUNTY MOUNTAIN
 T152N, R92W

FORT BERTHOLD INDIAN RESERVATION

BIA ROUTE NO. 3500
 NORTHERN LIGHT HOUSING STREETS
 6/10/2002



10	20
061	061
01	01
38	38
0.8	0.8

AREA A ABERDEEN

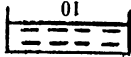
AGENCY 04 FORT BERTHOLD

RESERVATION 301 FORT BERTHOLD

ROUTE 3600 3 (CLASS) (NO.) (LENGTH MI.)
ESTIMATED COSTS FOR IMPROVEMENT M-\$

RIGHT OF WAY
INCIDENTAL CONSTRUCTION
GRADE & DRAIN
BASE AND/OR SURFACING
BRIDGES
TOTAL M-\$

DATE OF THIS REPORT 06/28/2002



SECTION NUMBER
COUNTY
CONGRESSIONAL DISTRICT
STATE
LENGTH
BRIDGE NUMBER
LENGTH
(MILES)

(NO.)
SURFACE WIDTH (FT.)
SURFACE TYPE
SHOULDER WIDTH (FT.)
SHOULDER TYPE
ROADWAY WIDTH (FT.)
RIGHT OF WAY WIDTH (FT.)
ADT (EXISTING) (YR.)
(V.P.D.)
(ESTIMATED FOR YEAR + 20 (V.P.D.)
ADEQUACY DESIGN STANDARD NO. (NO.)
FUTURE SURFACE TYPE
RATING

(20 & 21) SURFACE WIDTH & TYPE
(18 & 19) SHOULDER WIDTH & TYPE
(29) STOPPING SIGHT DISTANCE
(27) PASSING SIGHT DISTANCE
(0) HORIZONTAL ALIGNMENT
(0) GRADIENT
(0) SAFETY STUDY
(30) FOUNDATION CONDITION
(31) WEARING SURFACE CONDITION
(32) DRAINAGE CONDITION
(33) SHOULDER CONDITION
(34) ADJUSTED RATING
(M-\$) EST. COST TO IMPROVE ---TOTAL----

COUNTY MOUNTAIN
T152N, R92W

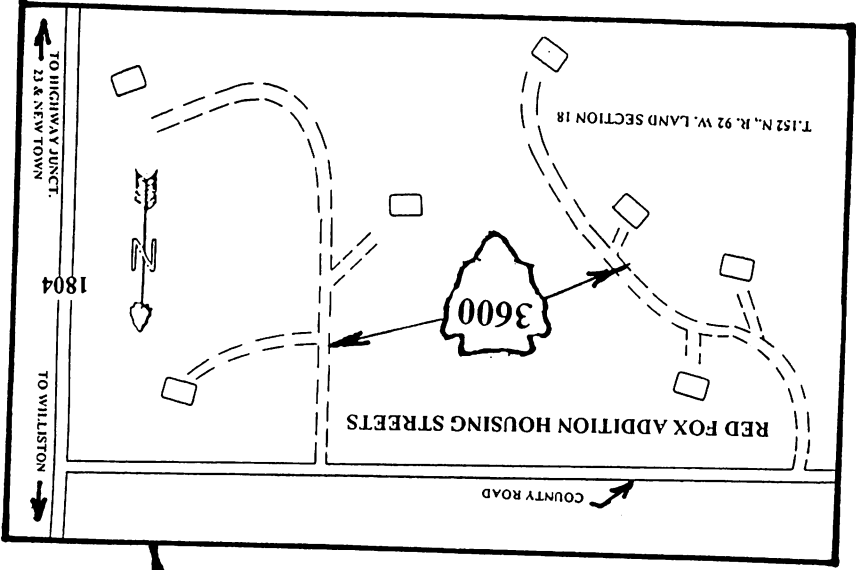
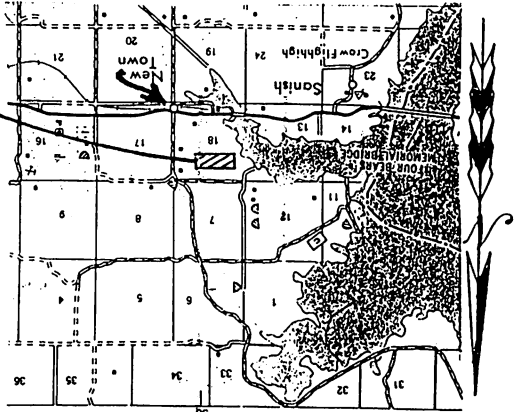
FORT BERTHOLD INDIAN RESERVATION

BIA ROUTE NO. 3600

RED FOX ADDITION HOUSING STREETS

Atlas Map 1 of 3

06/28/2002

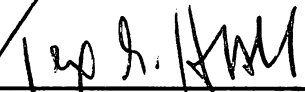


14. BIA Route No. 3500, Northern Light Housing Streets, 1.6 miles. Presently, streets is under construction at this time.
15. BIA Route No. 3600. Red Fox Addition Housing Streets, 0.3 miles gravel. Presently, streets is narrow and permanent streets is in the planning stage at this time.

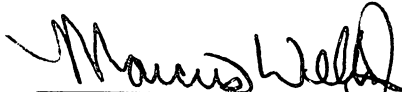
CERTIFICATION

I, the undersigned, as Secretary of the Tribal Business Council of the Three Affiliated Tribes of the Fort Berthold Reservation, hereby certify that the Tribal Business Council is composed of seven (7) members, of whom five (5) constitute a quorum, 07 were present at a regular meeting Thereof duly called, noticed, convened, and held on the 8th day of August, 2002; that the foregoing Resolution was duly adopted at such meeting by the affirmative vote of Members, 0 Members opposed, 0 Members abstained, 2 Members not voting, and that said Resolution has not been rescinded or amended in any way.

Dated this 8th day of August, 2002.
ATTEST:



Chairman, Tribal Business Council



Secretary, Tribal Business Council